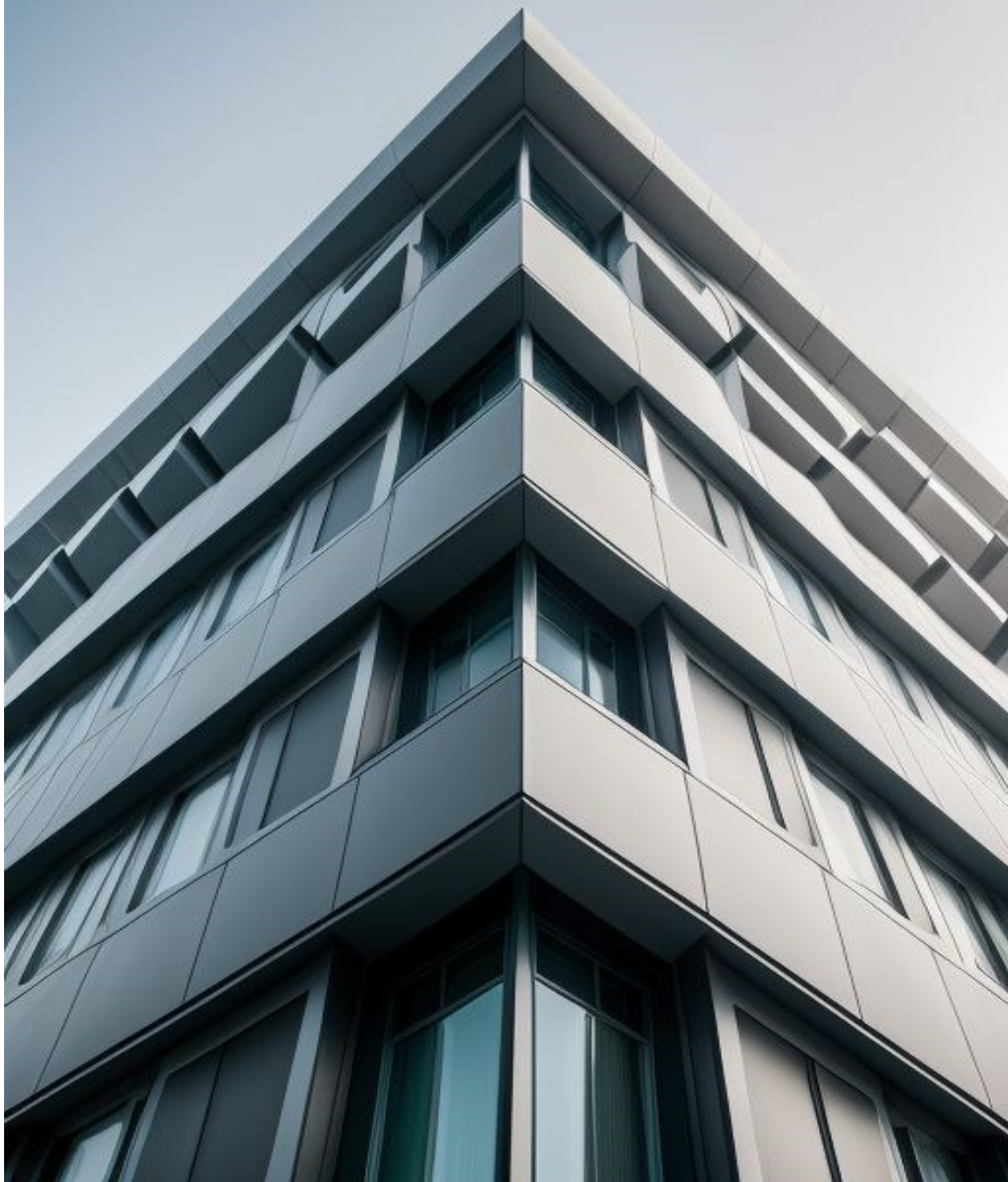


# WINKELBAU



# INDEX

04. Who We Are

## **Salamander Profile**

08. Salamander bluEvolution 73

14. Salamander bluEvolution 82

21. Salamander bluEvolution 92

## **Deceuninck Profile**

27. Deceuninck Zendow

30. Deceuninck Elegant

## **35. PVC Entrance Doors**

## **Sliding Doors**

47. Deceuninck Slide

51. PVC Terrace Doors (Soft-Close)

54. Salamander evolutionDrive (HST)

57. Deceuninck HS76

## **64. Types of Glass**

## **68. G-U Hardware**

## **72. Handles**

## **79. Aluminum Shutters**

## **83. Sliding Glass Closures**

## **Aluminum Joinery**

87. Exalco Albio 109C

91. Exalco Albio 109 STH

## **Sliding systems**

96. Exalco Albio 235

99. Exalco Albio 256

## **Acces doors**

103. Exalco Albio 135

106. Hotelia doors

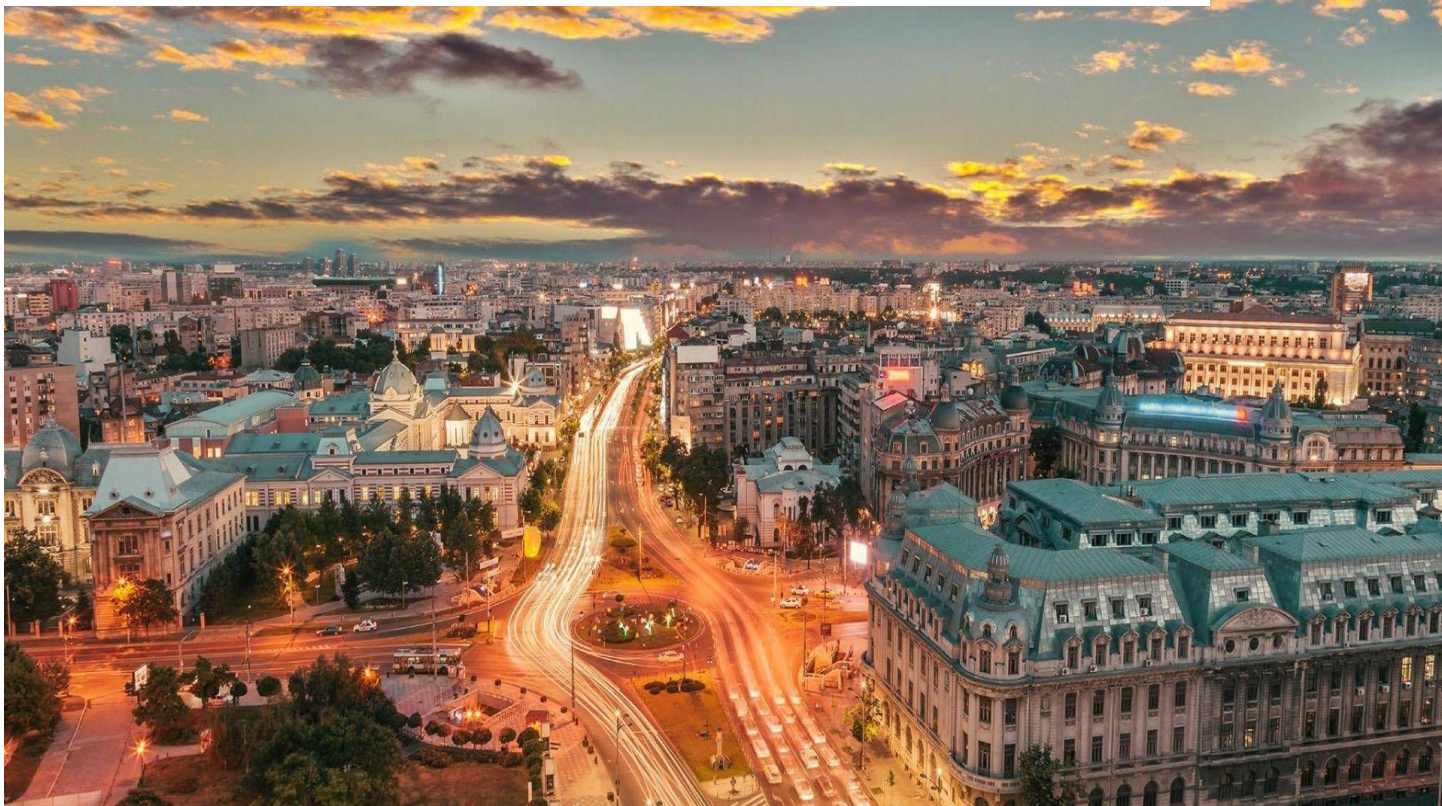
110. Residence doors

113. Premium doors

118. Delivery and packaging



We offer our customers high-quality products and services, which guarantee a comfortable and safe environment.



Our partners are leading companies in the industry.

**SALAMANDER**  
WINDOW & DOOR SYSTEMS

**GU**  
GRETSCH-UNITAS

greente**Q**

**GUARDIAN**  
**GLASS**  
See what's possible™

**deceuninck**  
BELGIUM  
PVC WINDOWS

**KFV**  
Ein Unternehmen der SIEGENIA GRUPPE

**HOPPE®**  
Handle of excellence.

**SAINT-GOBAIN**

## Who we are ?

Winkelbau is a Romanian company manufacturing PVC and aluminum doors and windows, founded in 2011.

Our main objective is to offer high-quality products and services that ensure comfort and security to our customers.

Our products are made with premium materials from manufacturers such as Salamander, Deceuninck, Exalco, or Cortizo, according to the latest European standards.

We offer a wide range of models and colors to meet all the needs and tastes of our customers. Our extensive product range includes PVC and aluminum windows, sliding doors, external doors, and external aluminum shutters. Our products are shipped throughout Europe. We are a team of professionals with over 12 years of experience in the PVC window manufacturing industry.

We are committed to providing our customers with a purchasing and usage experience at the highest European standards.

If you are looking for high-quality PVC doors and windows, Winkelbau is the right company for you.





## Why choose Winkelbau?



### **A rich experience:**

We have hundreds of satisfied customers and just as many achievements, both in homes and offices, as well as in public installations.

We offer a 5-year warranty, as well as post-warranty service, to ensure the longevity of our products.

Modern production line - 80% of our production is carried out on automated lines, thus ensuring high-quality products. We are able to produce windows tailored to the specificities of each market.

### **A team of professionals:**

Each employee contributes to the success and development of our company. The extensive experience and knowledge of our specialists in the technical and commercial departments allow them to provide advice that meets the needs of customers and to propose solutions that are suitable for them. We have implemented a new multilingual customer service model to ensure comprehensive and rapid technical support.



We work with renowned suppliers and distributors in the window industry. In every partner showroom where Winkelbau products are available, commercial agents provide professional advice to our customers, to guide them best in their choices and to offer them solutions tailored to their needs.

**SALAMANDER**  
WINDOW & DOOR SYSTEMS

The advantages of a partnership with Winkelbau:

- Access to the full range of our products
- Fast order processing
- Transport throughout Europe
- Full range of colors
- Use of the latest technologies

**deceuninck**

**GU**





A majority family-owned company based in Türkheim, Unterallgäu, operates in five strong business areas:

- Windows and doors
- Fencing systems
- Roof elements
- PVC profiles
- Extrudec Solutions

Salamander is a German company with over 70 years of experience in the production of PVC windows and doors. The company operates in over 40 countries and has an annual turnover of over 1.5 billion euros. A global company with a local approach.

These areas of activity have been designed so that the corporate group can operate successfully in the markets of interest, accurately perceive trends, and make the most of its opportunities. High-quality windows and doors.



**Profile width: 73 mm**

**Insulation chambers: 5**

**Number of seals: 2**

**Glass thickness: 24 mm double  
glazing / 44 mm triple glazing**

**Thermal conductivity coefficient:  
 $U_f = 1.2 \text{ W/(m}^2\text{K)}$  and up to  $U_w = 0.73$   
 $\text{W/(m}^2\text{K)}$**

**Sound insulation: up to 46 dB**

**Burglary protection: RC2**





The captivating design of windows combined with modern technology. bluEvolution 73 meets all the requirements for sophisticated window design: With its extremely compact surfaces, the profile is not only very easy to maintain, but also has an extraordinarily long lifespan.

The window system avoids thermal bridges, thus significantly reducing energy costs.

The intelligent construction of the profiles with large steel reinforcements offers excellent stability and reliable operation.

With numerous finishes and surfaces, as well as the option of aluminum coatings, windows from the bluEvolution 73 system are attractive at all levels.





## Now is the time for creativity.

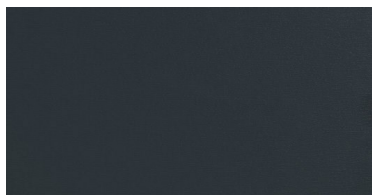
Let your imagination run wild in setting up the windows. Whether you want to accentuate or emphasize elements of the facade with color, Salamander windows stand out for their incredible variety of decorative options.

Of course, upon request, we can also provide individual RAL shades and special tones.

Combine Salamander synthetic material windows with the modern look of aluminum. The excellent thermal insulation characteristics of the PVC frames and sashes result in better insulation properties ( $U_w$ ) for the window as a whole.

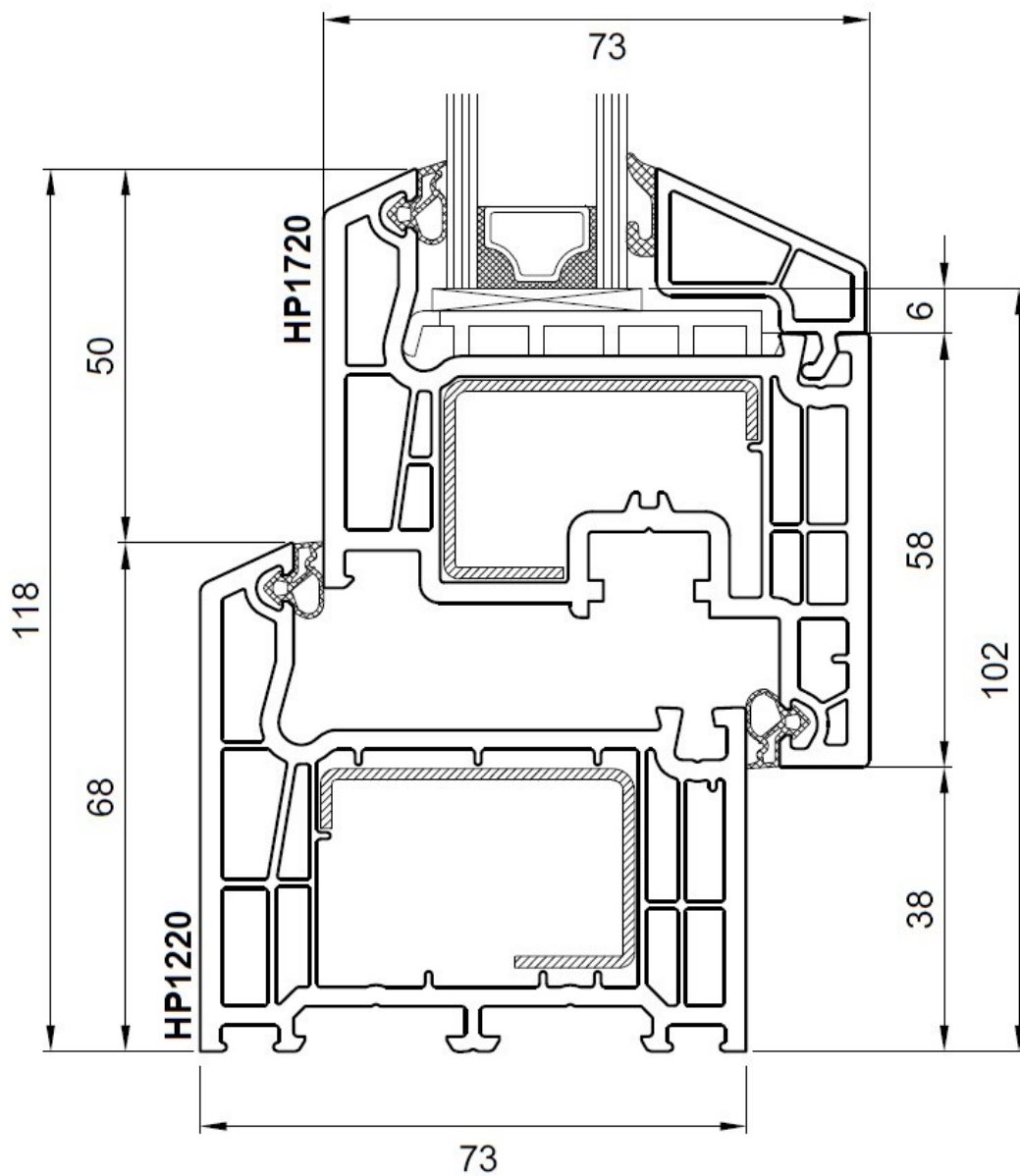
Even after years, Salamander synthetic profiles do not lose their beauty, as the coating with precious films acts as a protective layer that safeguards the profiles from weathering. Furthermore, maintenance and cleaning of Salamander fixtures are extremely easy.

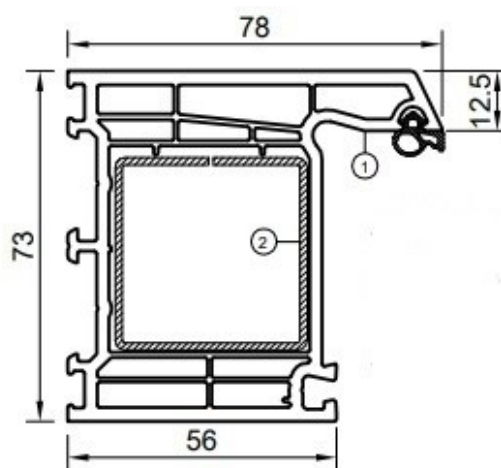
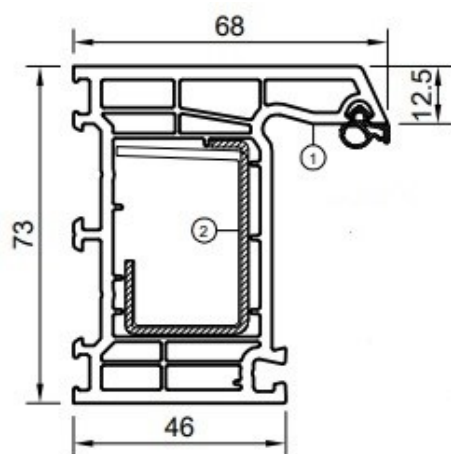
## Standard Colors



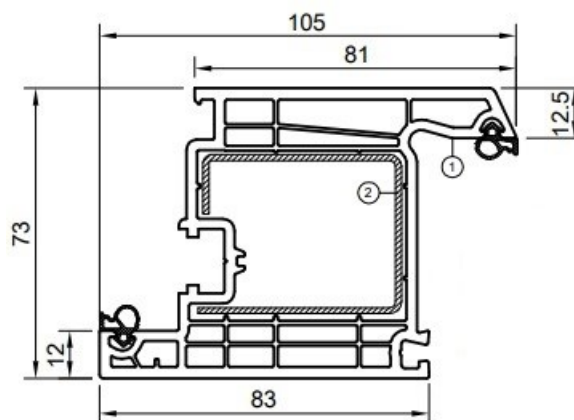
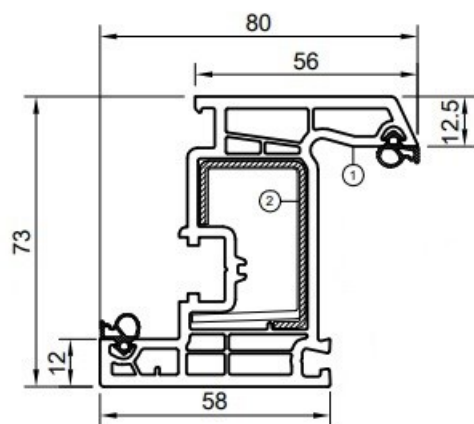
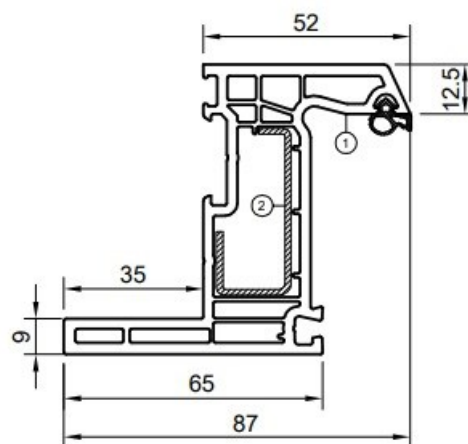
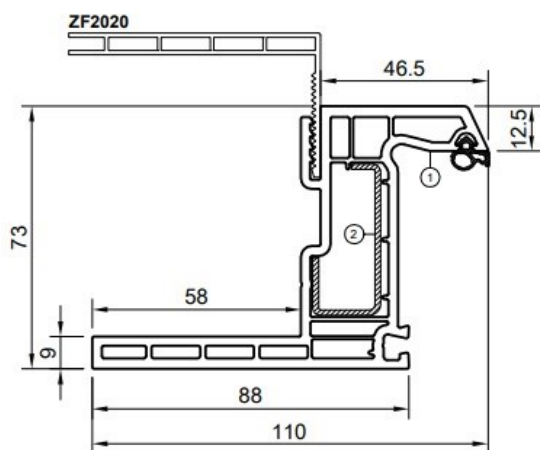
[salamander-windows.com/  
produktwelt/innovation-weiteres/  
farben-dekore](https://salamander-windows.com/produktwelt/innovation-weiteres/farben-dekore)



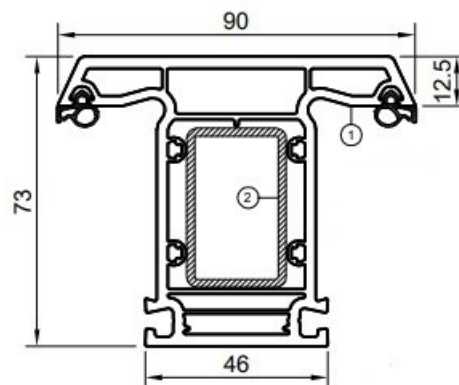
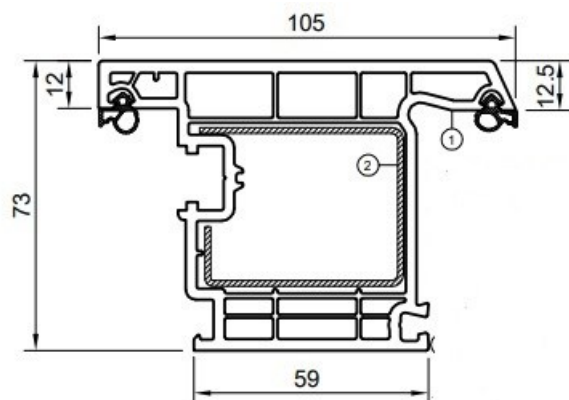




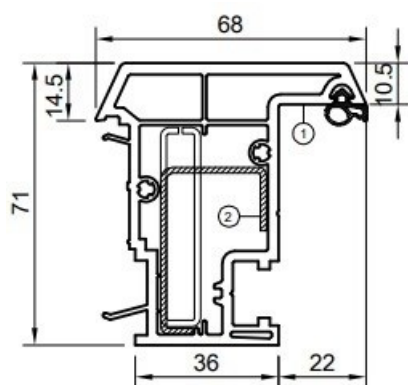
Telaio L 68mm







Telaio L 68mm



**Profile width: 82 mm**

**Insulation chambers: 6**

**Number of seals: 3**

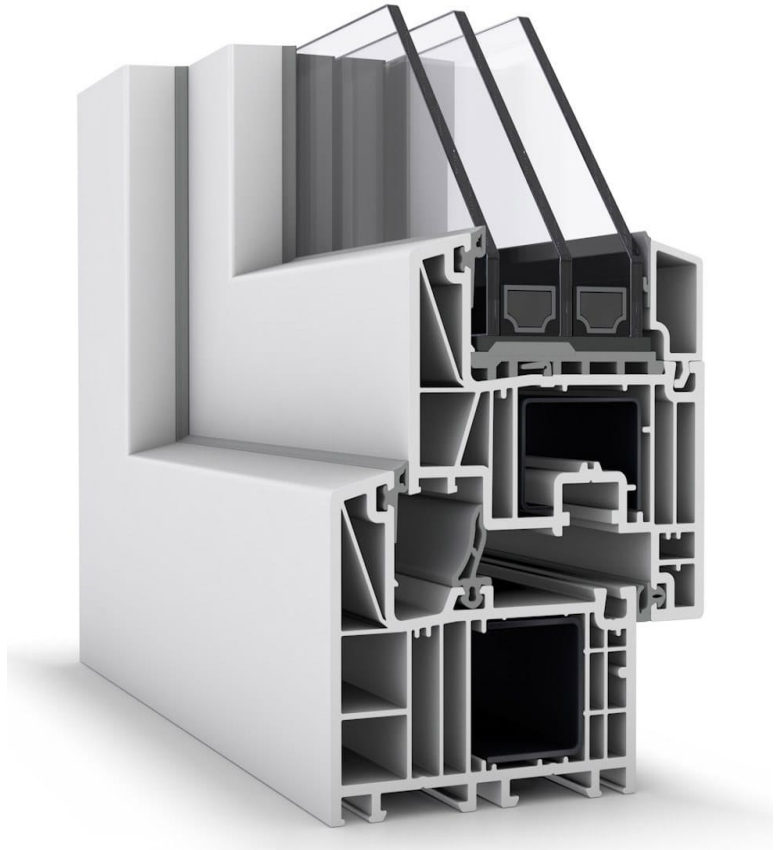
**Glass thickness: 32 mm double glazing / 48 mm triple glazing**

**Thermal conductivity coefficient:  $U_f = 0.98 \text{ W/(m}^2\text{K)}$  and up to  $U_w = 0.65 \text{ W/(m}^2\text{K)}$**

**Sound insulation: up to 47 dB**

**Burglary protection: RC2**

**Certified Passive House**



Windows have a minimal impact on construction costs but significantly influence your home:

- Stylish windows give the house its character and increase its real estate value.
  - Daylight improves the living atmosphere and has a positive effect on health and psyche.
  - The energy contribution of well-insulated windows is comparable to that of heating.
  - With modern windows, you can save between 25% and 50% on heating costs, thus reducing pollution and CO2 emissions.
  - Windows allow for optimal management of the indoor environment's climate.
  - The right windows can reduce the risk of burglary by 80%.
- By choosing suitable windows, urban areas can reduce external noise pollution by 75%.





## Energy efficiency — A new dimension

Salamanader bluEvolution 82 MD brings a new dimension to energy efficiency.

The use of the central gasket arranged in the visible frame allows for further improvement of the thermal and acoustic insulation characteristics of the windows.

The sophisticated sealing system offers maximum protection against weather conditions and makes your home particularly welcoming in any season.



## Renovation in style with bluEvolution 82

The renovation of windows in facades subject to monument protection is subject to strict constraints and therefore requires sensitivity to style and attention to detail.

Therefore, careful planning and execution are particularly important. Especially for the renovation of historic windows, with the bluEvolution 82 system, we offer a wide range of shapes, sizes, divisions, and mullions.



## Now is the time for creativity.

Let your imagination run wild in setting up the windows. Whether you want to accentuate or emphasize elements of the facade with color, Salamander windows stand out for their incredible variety of decorative options.

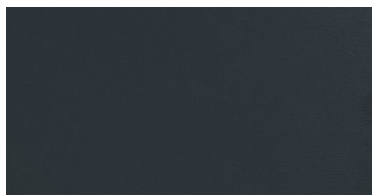
Of course, upon request, we can also provide individual RAL shades and special tones.

Combine Salamander synthetic material windows with the modern look of aluminum. The excellent thermal insulation characteristics of the PVC frames and sashes result in better insulation properties (Uw) for the

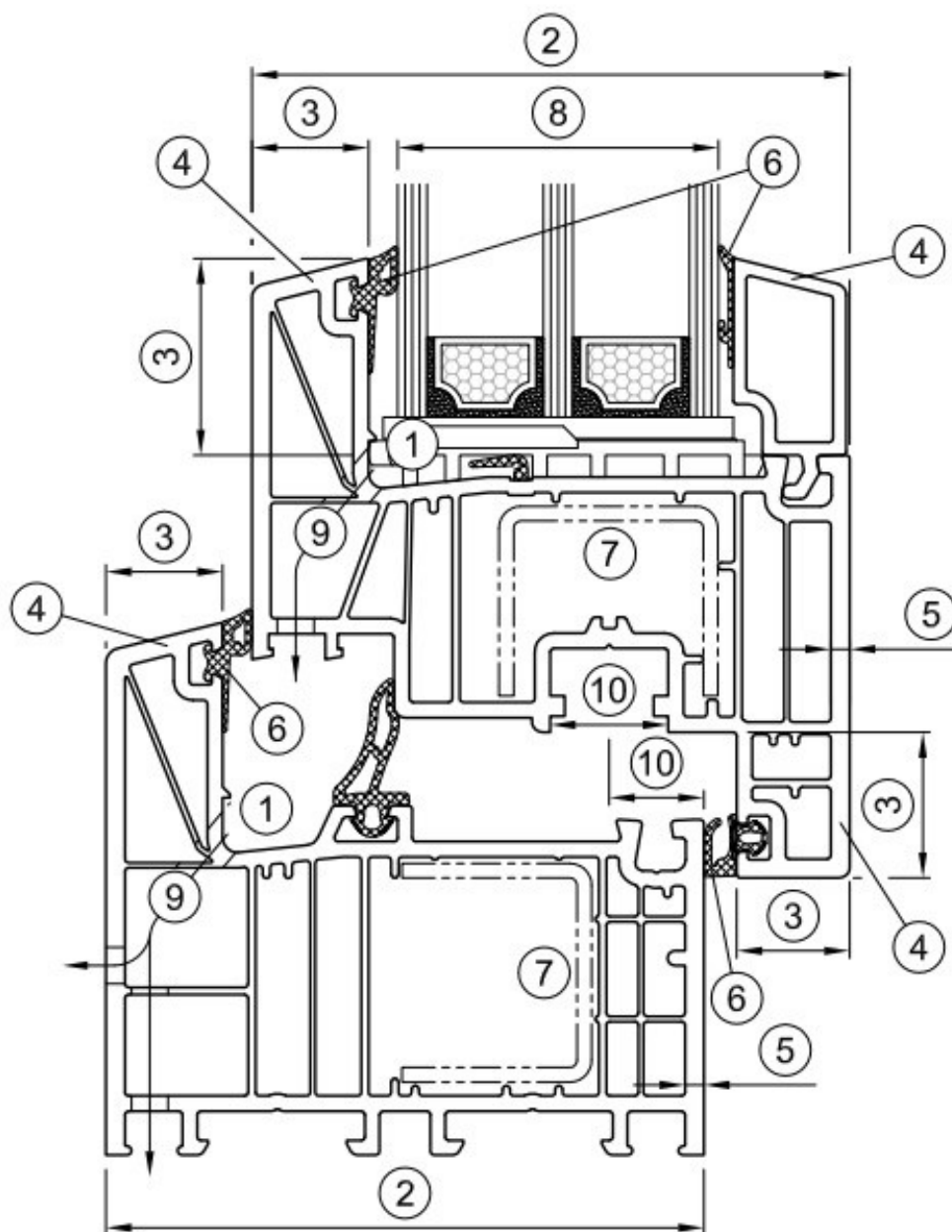
window as a whole.

Even after years, Salamander synthetic profiles do not lose their beauty, as the coating with precious films acts as a protective layer that safeguards the profiles from weathering. Furthermore, maintenance and cleaning of Salamander fixtures are extremely easy.

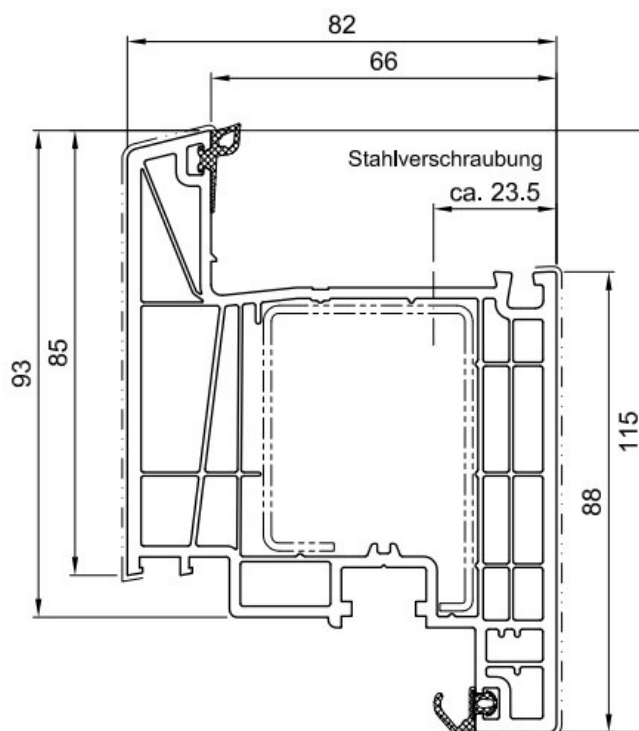
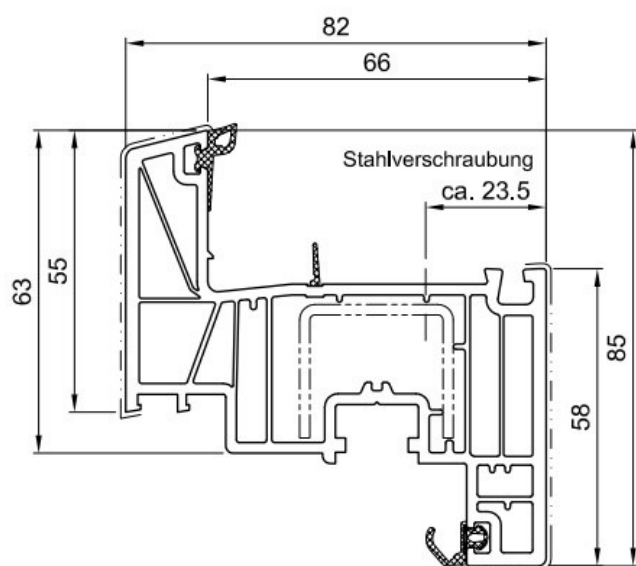
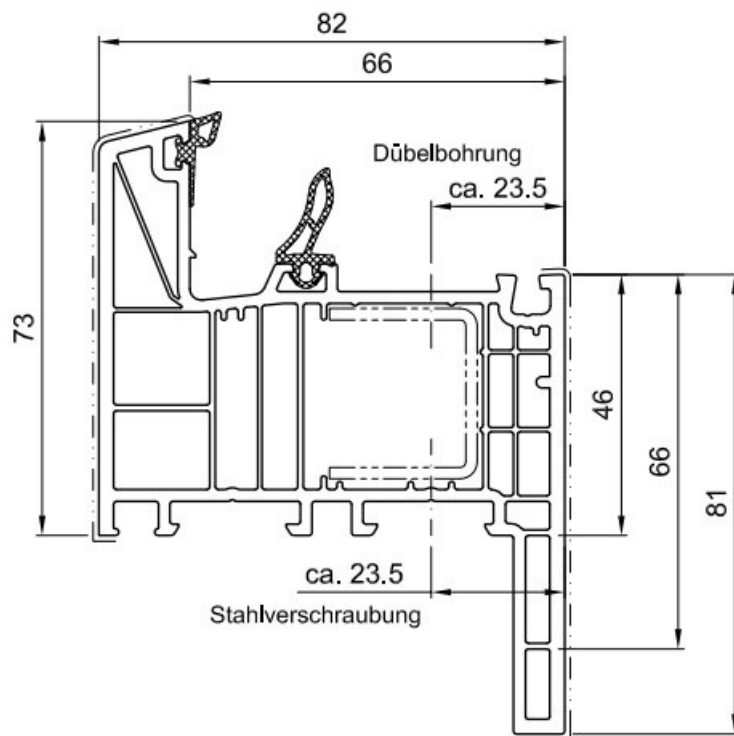
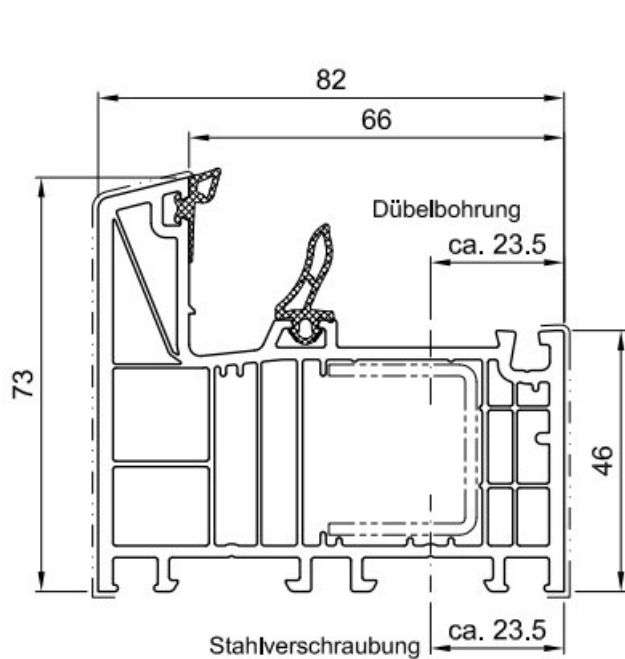
### Standard colors

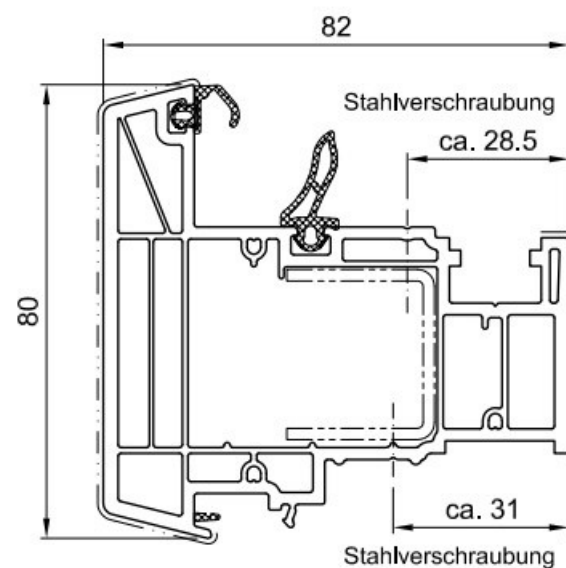
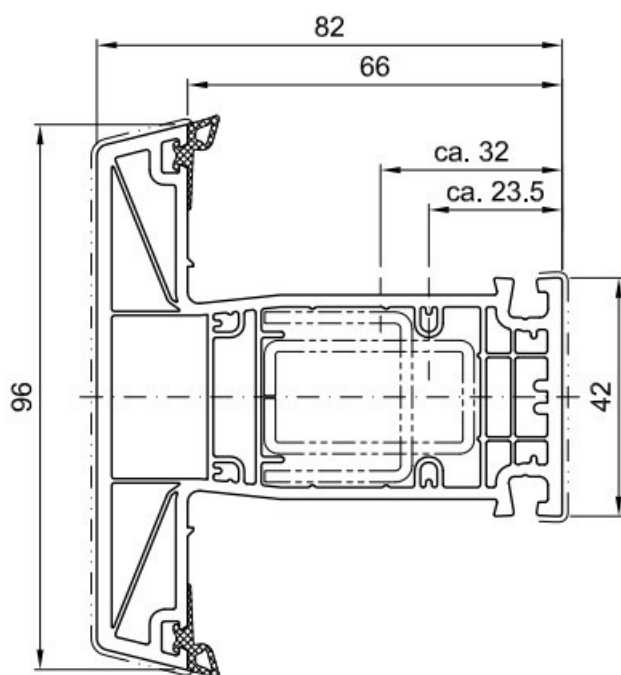
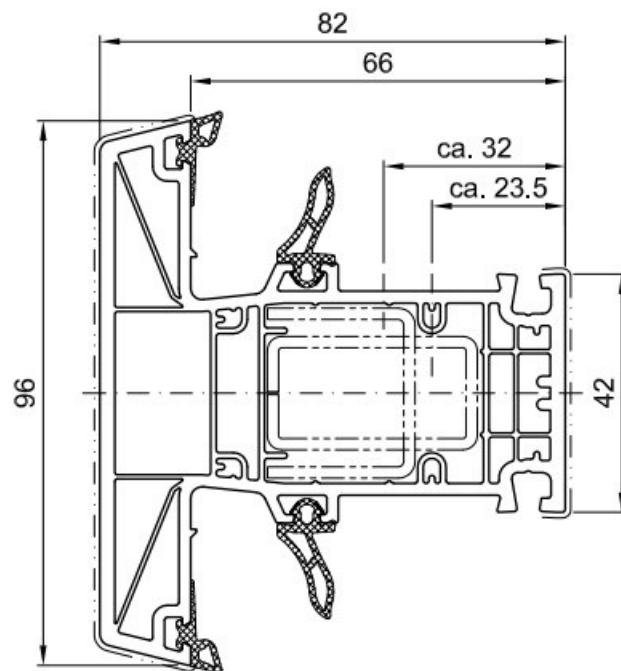
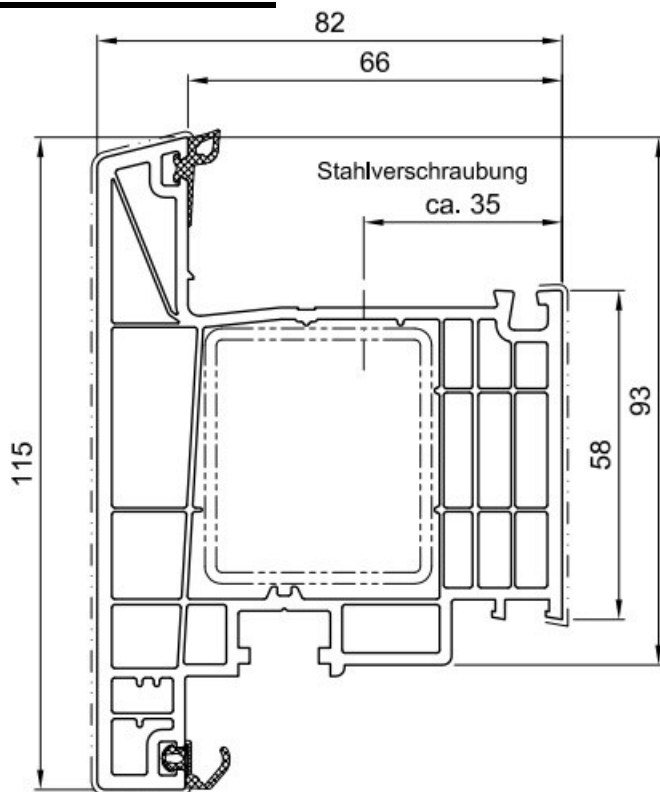


[salamander-windows.com/  
produktwelt/innovation-  
weiteres/farben-dekore](https://salamander-windows.com/produktwelt/innovation-weiteres/farben-dekore)









HO9800

**Profile width: 92 mm**

**Insulation chambers: 6**

**Number of seals: 3**

**Glass thickness: 52mm triple glazing**

**Thermal conductivity coefficient:  $U_w = 0.70 \text{ W}/(\text{m}^2\text{K})$  with thermally separated steel**

**Sound insulation: up to 47 dB**

**Burglary protection: RC3**

**Certified Passive House**



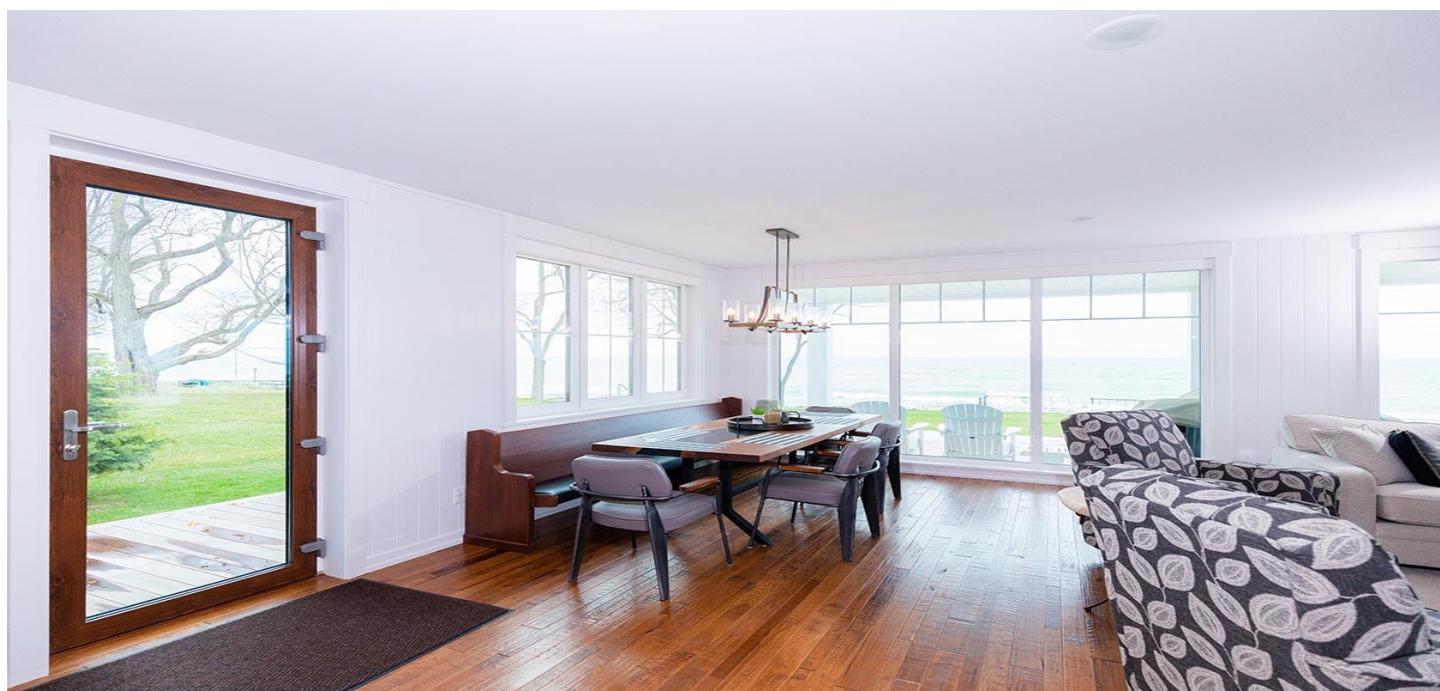


The bluEvolution 92 system combines forward-thinking technology with the modern and objective design of the new generation of superior-level windows.

The optimized 6-chamber structure and the 92 mm depth guarantee perfect insulation and maximum energy efficiency.



Thanks to a 118 mm visible plane edge, maximum gain in terms of sunlight, and the ecological sustainability of 100% recyclable materials, bluEvolution 92 is the future system of Salamander's home.







## Now is the time for creativity.

Let your imagination run wild in setting up the windows. Whether you want to accentuate or emphasize elements of the facade with color, Salamander windows stand out for their incredible variety of decorative options.

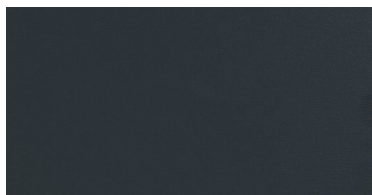
Of course, upon request, we can also provide individual RAL shades and special tones.

Combine Salamander synthetic material windows with the modern look of aluminum. The excellent thermal insulation characteristics of the PVC frames and sashes result in better insulation properties (Uw) for the

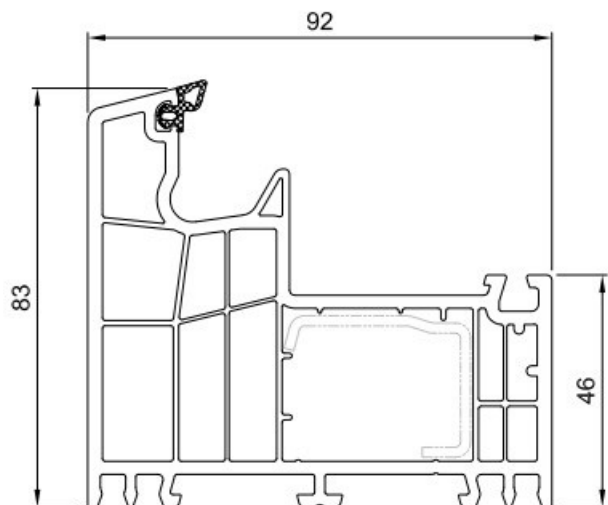
window as a whole.

Even after years, Salamander synthetic profiles do not lose their beauty, as the coating with precious films acts as a protective layer that safeguards the profiles from weathering. Furthermore, maintenance and cleaning of Salamander fixtures are extremely easy.

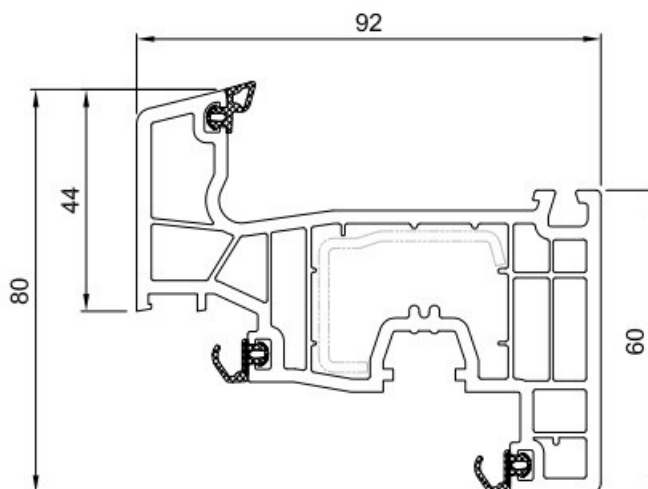
### Standard colors



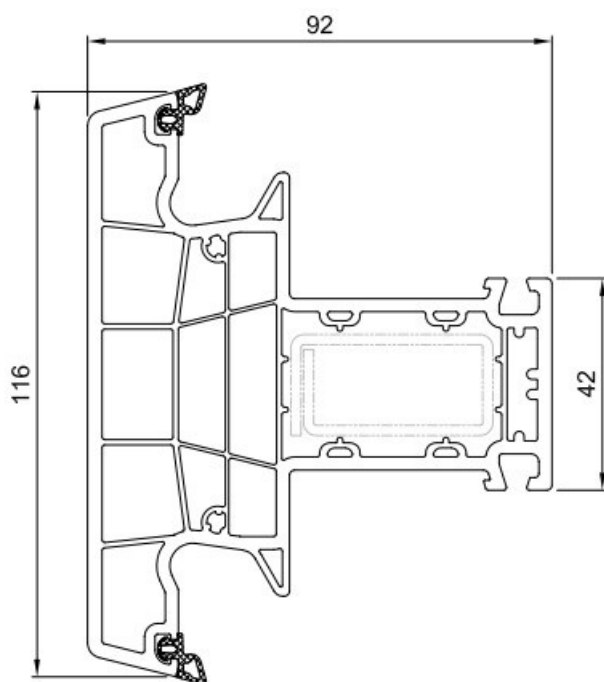
[salamander-windows.com/  
produktwelt/innovation-  
weiteres/farben-dekore](https://salamander-windows.com/produktwelt/innovation-weiteres/farben-dekore)



**170 420**

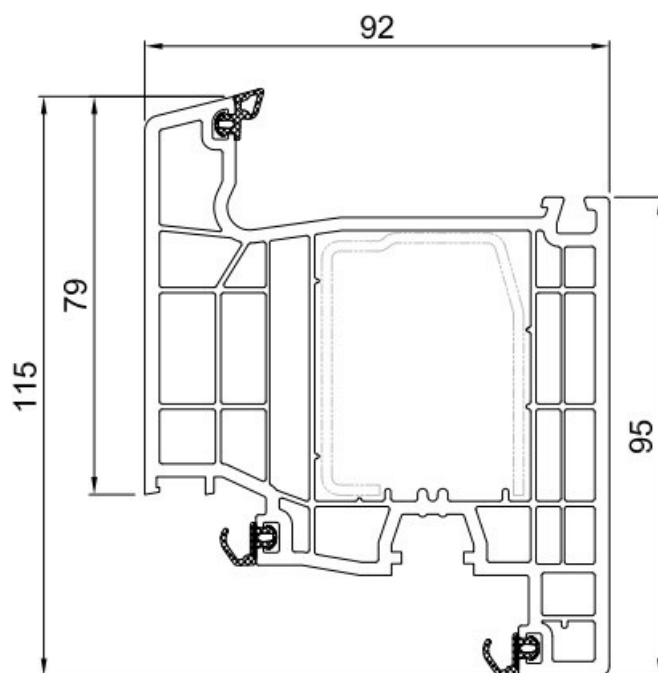


**171 020**

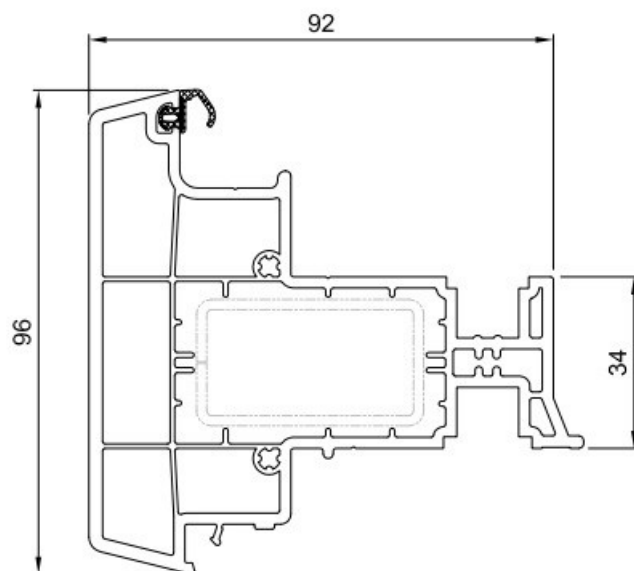


**172 420**





**171 030**



**176 030**



## **World leader in the production of PVC profiles for windows and doors**

Deceuninck is a Belgian company with over 80 years of experience in the production of PVC profiles for windows and doors. The company operates in over 90 countries and has an annual turnover of over 600 million euros.

Deceuninck is recognized for the innovation and quality of its products. The company invests constantly in research and development to offer customers the latest solutions in windows and doors.

Deceuninck PVC profiles are made with high-quality materials, respecting the strictest safety and performance standards. They offer excellent thermal and acoustic insulation, as well as strong weather resistance.



**Profile width: 70 mm**

**Insulation chambers: 5**

**Number of seals: 2**

**Seal: Grey TPE**

**Glass thickness: 24 mm double glazing; 38 mm triple glazing**

**Standard: EN12608**

**Thermal conductivity coefficient:  $U_f=1.4 \text{ W/m}^2\text{K}$**





Windows in classic colors, a white RAL 9016\*, an ivory RAL 9001\*, and a grey RAL 7035\*. With Deceuninck's solid colors, simplicity and style accompany you.



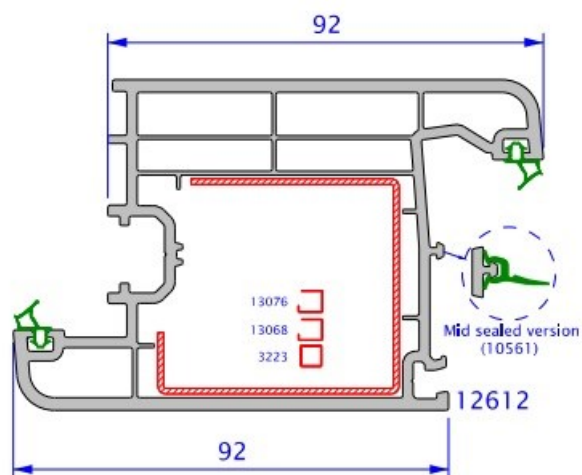
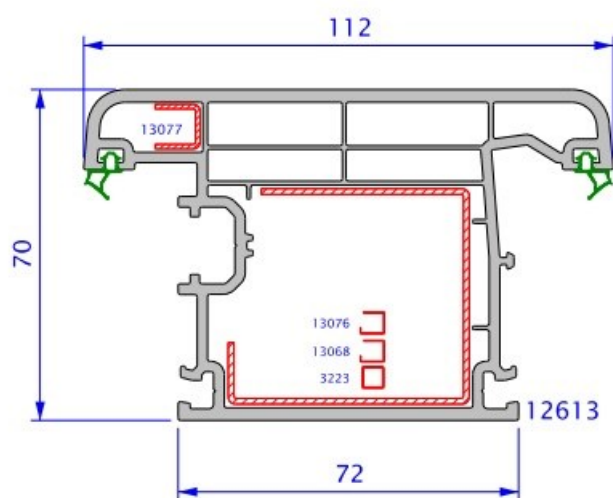
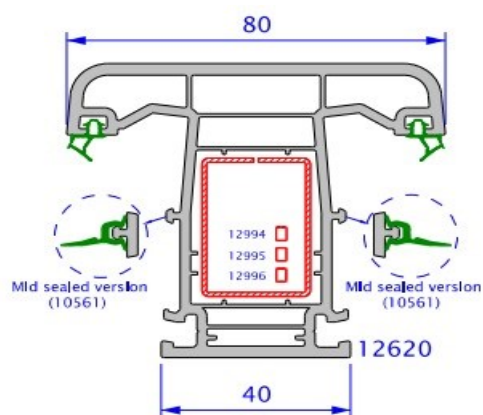
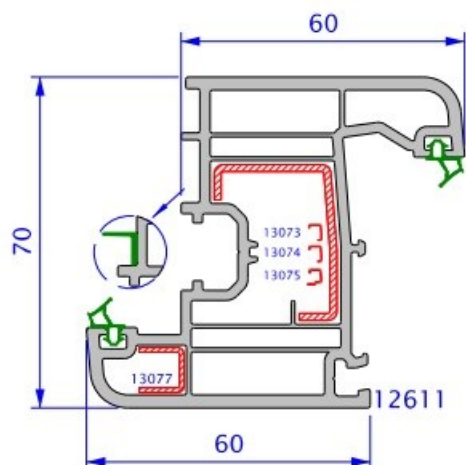
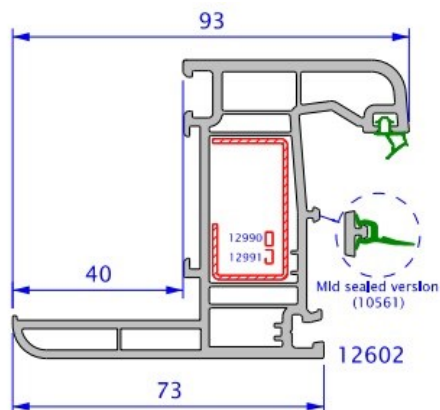
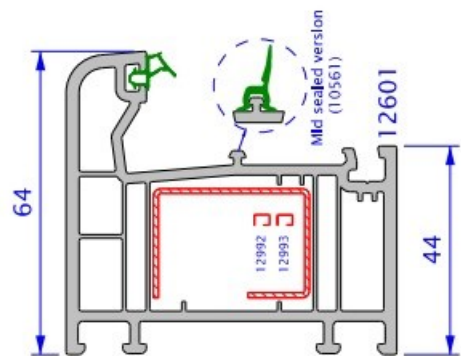
## Natural wood-coated structure

### Laminated finish

Profiles can be coated with UV-resistant acrylic film. With a wide range of choices, many colors ranging from natural wood appearance to painted, all without any maintenance required. Create the style for your windows, choose to see the world through windows with colors that give you serenity.



# Profile sections





**Profile width: 76 mm**

**Insulation chambers: 5**

**Number of seals: 2**

**Glass thickness: 24 mm double glazing / 48 mm triple glazing for highly thick thermal, safety, and sound-proofed glass**

**Thermal conductivity coefficient:  $U_f = 1.0 \text{ W/(m}^2\text{K)}$  and up to  $U_w = 0.62 \text{ W/(m}^2\text{K)}$**

**Sound insulation to noise protection class 5**

**Burglary protection: RC2**

**Certified Passive House**







## **A delight for the eyes**

Our windows and doors are available in various styles, colors, and finishes. Thanks to the Smart Colors range, it is possible to combine PVC and aluminum profiles in the same project.

- For every style, there is a solution: modern, contemporary, classic, urban, etc.
- A wide range of colors with 50 options: all modern shades, warm wood structures.
- Glossy or matte finish.
- Low-impact hidden drainage system.



## **Excellent resistance to air, water, and wind.**

PVC profiles have the highest thermal insulation value on the market and meet all requirements in terms of energy efficiency. They are also airtight, waterproof, and windproof. Therefore, they provide the desired comfort, regardless of the weather. Elegant windows and doors are also a pleasure for the ears: our various glass thicknesses offer optimal acoustic comfort in all circumstances.



## **A feeling of security**

The reinforcements in our windows and doors make them more resistant and also offer greater protection against burglaries. Additionally, our products comply with all legal fire safety regulations.

## COLORS

Windows in classic colors, a white RAL 9016\*, an ivory RAL 9001\*, and a grey RAL 7035\*. With Deceuninck's solid colors, simplicity and style accompany you.



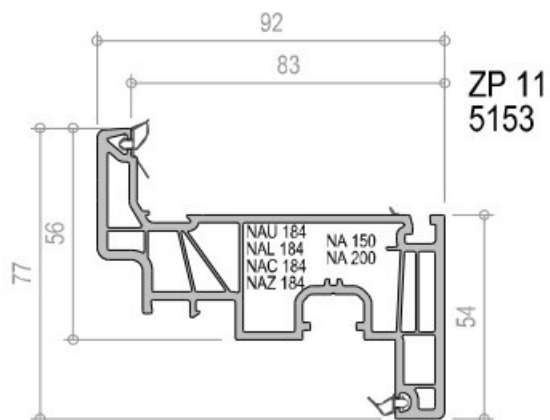
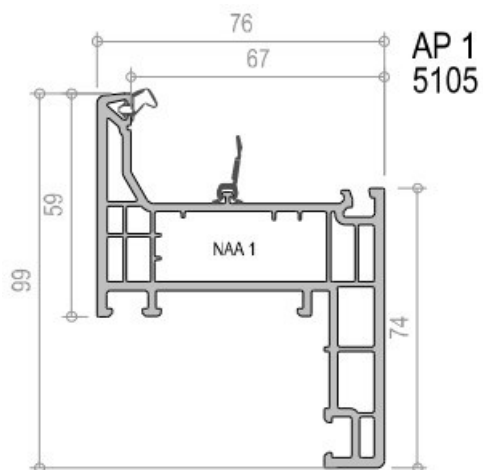
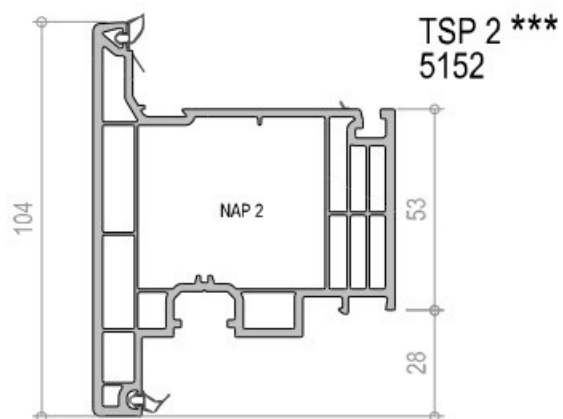
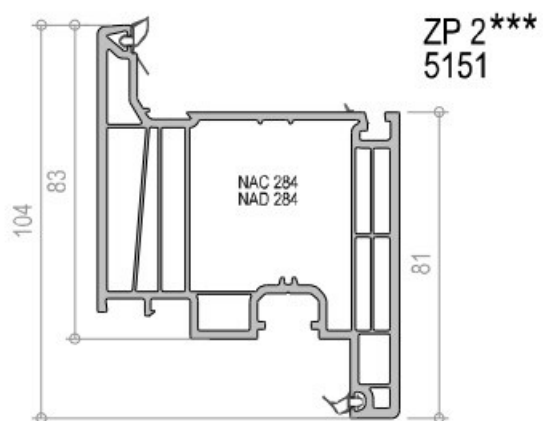
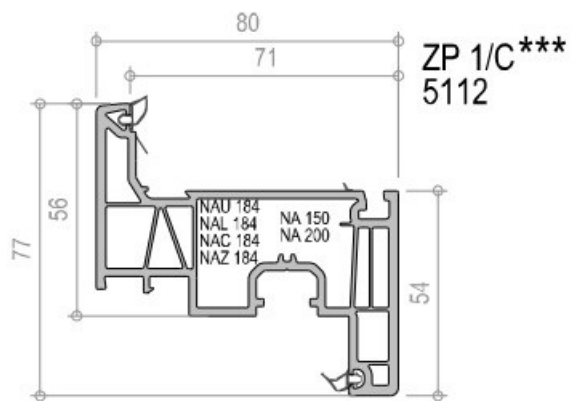
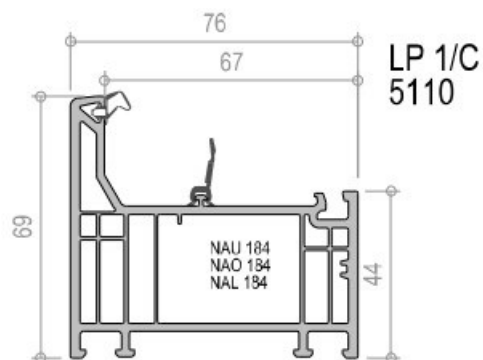
## Natural wood-coated structure

### Laminated finish

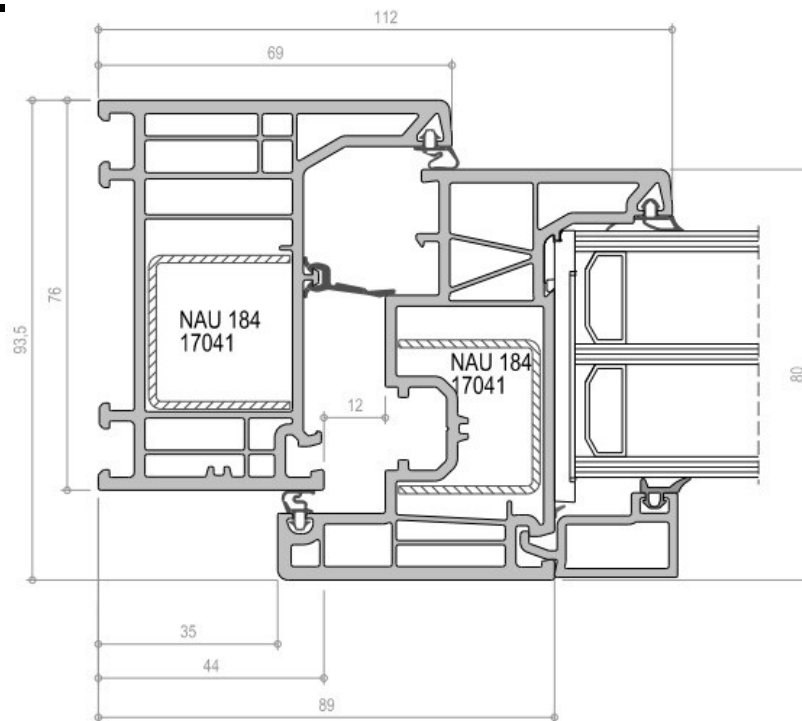
Profiles can be coated with UV-resistant acrylic film. With a wide range of choices, many colors ranging from natural wood appearance to painted, all without any maintenance required. Create the style for your windows, choose to see the world through windows with colors that give you serenity.









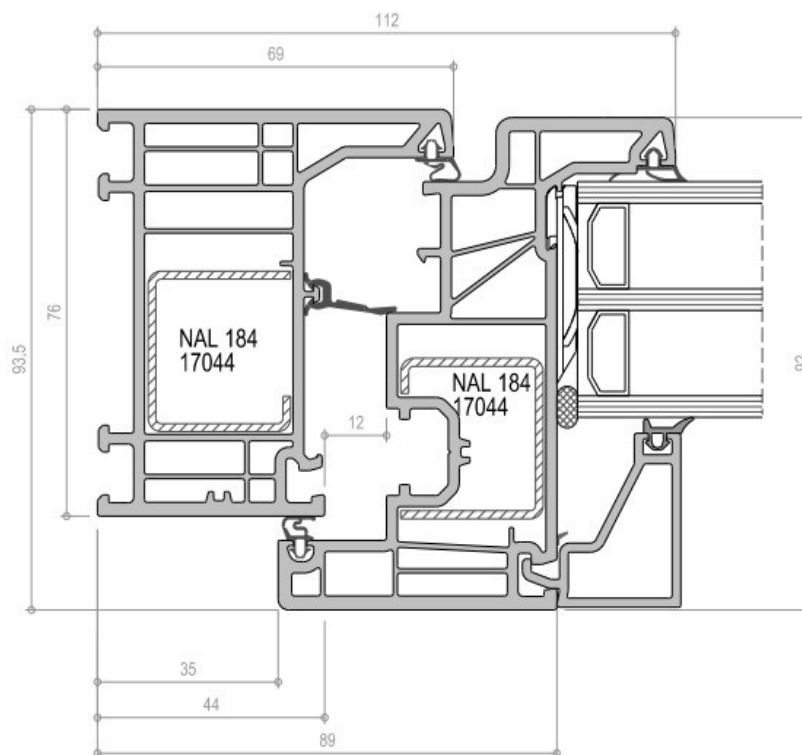


LP 1 - 5103\*  
LP 1/C - 5110

Rahmen  
frame  
dormant  
marco  
chiassile

ZP 1 - 5150\*  
ZP 1/C - 5112

Flügel  
vent frame  
vantail  
hoja  
battente



LP 1 - 5103\*  
LP 1/C - 5110

Rahmen  
frame  
dormant  
marco  
chiassile

ZP 11 - 5153

siehe besondere  
Verarbeitungsrichtlinie  
Abschnitt 6 / 23

Flügel  
vent frame  
vantail  
hoja  
battente

## PVC Entrance Doors: Protection, Comfort, and Design

PVC entrance doors are an excellent choice for any residential or commercial building. They offer an ideal combination of protection, comfort, and design.

### Protection:

PVC entrance doors are highly resistant to weather and break-ins. They are made with high-quality materials, ensuring long-lasting durability.

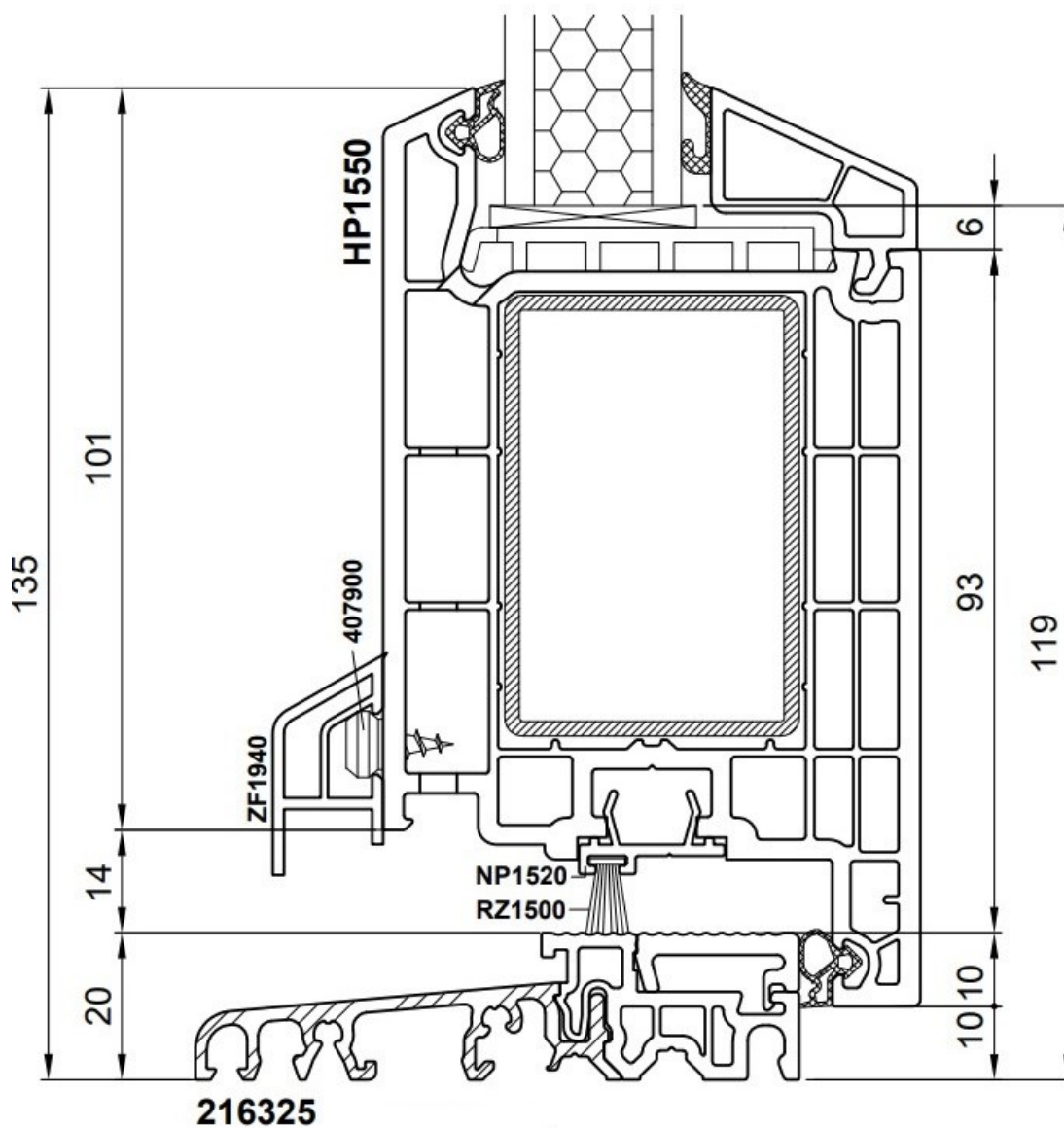
### Comfort:

These doors provide a high level of comfort. They are well insulated thermally and acoustically, contributing to a pleasant atmosphere inside the home or commercial building.

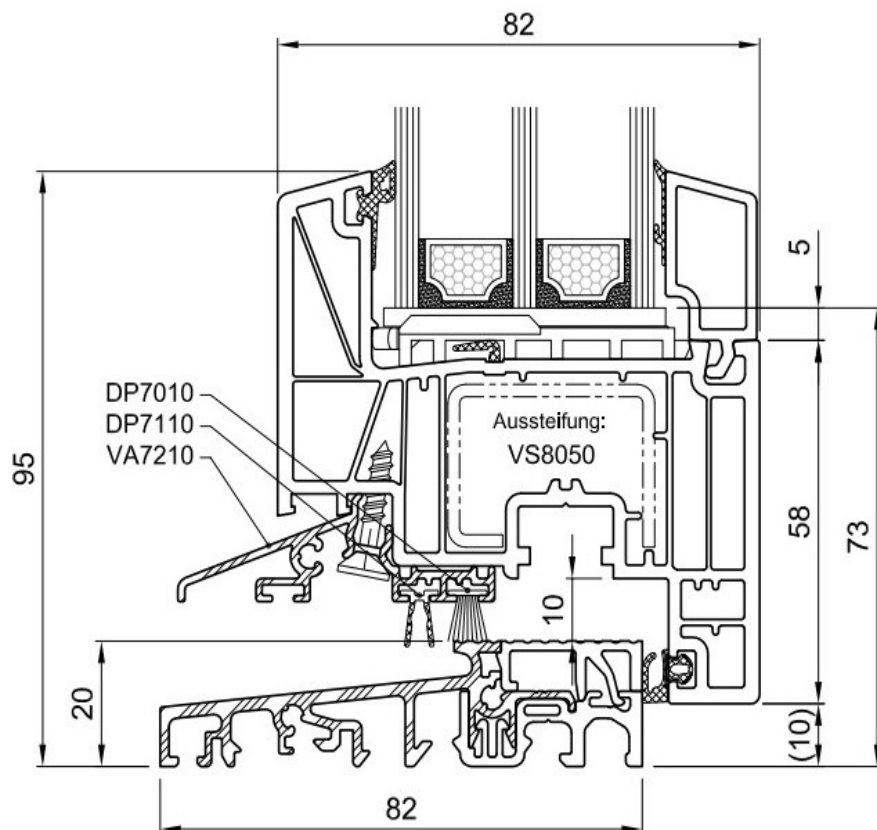
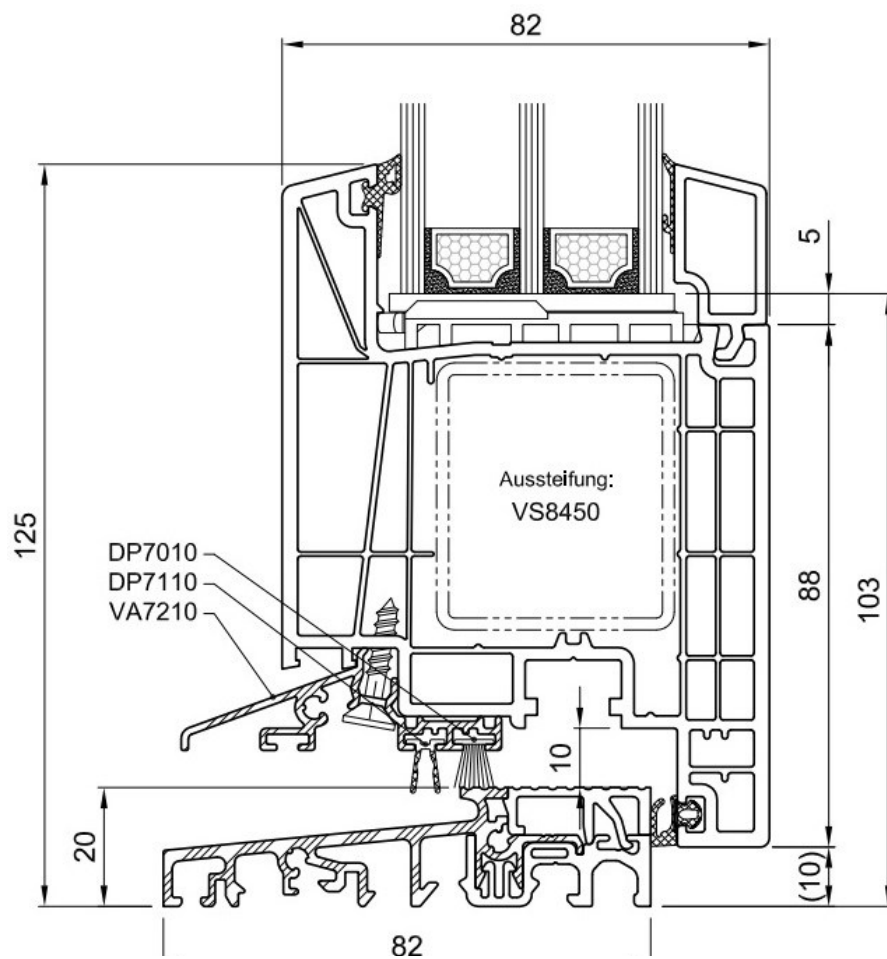
### Design:

PVC entrance doors are available in a variety of models and colors, allowing them to be perfectly adapted to any architectural style









Winkelbau offers high-quality decorative panels for entrance doors, available in a variety of sizes and shapes. They are made with state-of-the-art materials that guarantee strength and durability.

The decorative panels for entrance doors are made of PVC and foam padding, using advanced technology. They can be made in different thicknesses, according to your needs.

To increase security, decorative panels for doors can be ordered with reinforcement systems in MDF, aluminum, or steel.



P 5



N85



S38



N86



P 6



N87



S39



N88



S1



S2



S3



S4



N1



P1



S5



S6



N2



N3



N4



S7



N5



N6



N7



S8



N8





N9



N10



S9



N11



N12



N13



S10



N13



N13



N14



S11



N15



N16



N17



S12



N18



N19



N20



S13



N21



N22



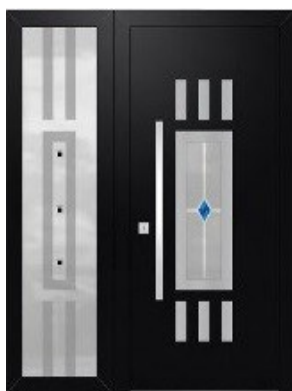
N23



S14



N24



N25



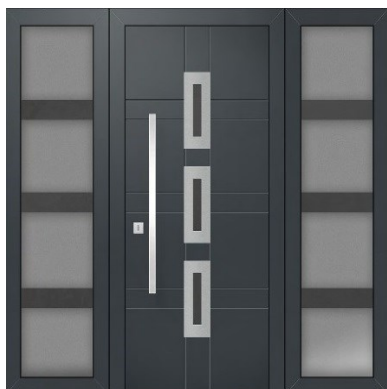
S15



S16



N26



P 1



N27



S17



N28



N29



N30



S18



N31



N32



N33



S19



N34



N35



N36



S20



N37



N38



N39



S21



N40





N41



N42



S22



N43



N44



N45



S23



N46



N47



N48



S24



N49



N50



N51



S25



N52



N53



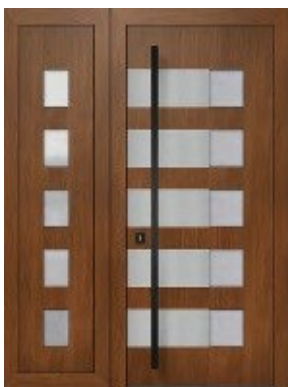
N54



S26



N55



N56



N57



S27



N58



N59



N60



S28



N61



N62



N63



S29



N64



P 2



N65



S30



N66



N67



N68



S31



N69



P 3



N70



S32



N71



M 1



N72



S33



N73





N74



N75



S34



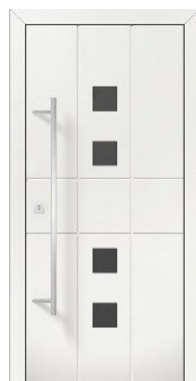
N76



N77



N78



S35



N79



N80



N81



S36



N82



P 4



N83



S37



N84

## DECEUNINCK SLIDE

### Superior Insulation

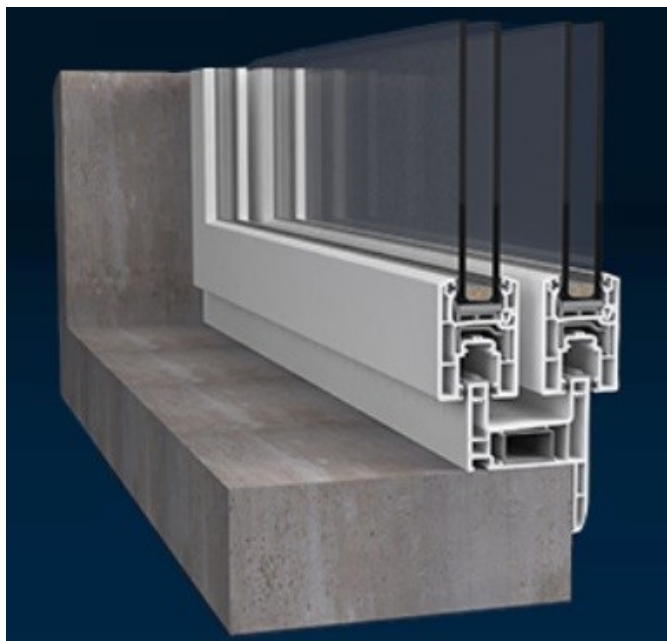
All profiles and accessories related to the sliding system are specially designed to offer optimal insulation with brush seals and TPE gaskets.

### Versatility

This system allows for varied sliding solutions, with single, double, or triple track, along with insect screens. There are two different options for frames (3 chambers) depending on the type of windows and doors.

### Innovation and Compatibility

The sliding door system can be combined with Zendow and Everest Max systems using auxiliary profiles. Additionally, for wind pressure protection, aluminum end profiles are used, allowing for larger openings. The door with double opening or with a fixed part allows for lateral or top fixing. All system profiles comply with EN 12608 standards.





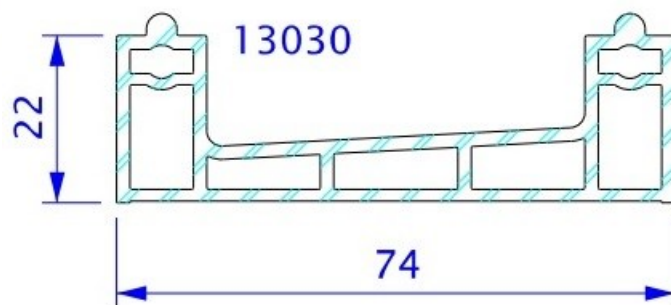
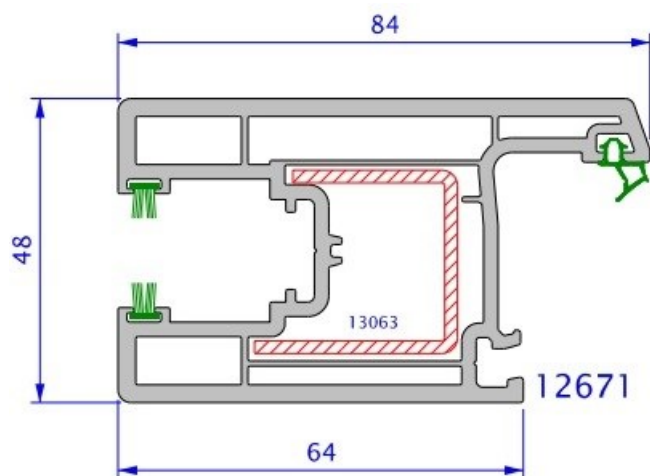
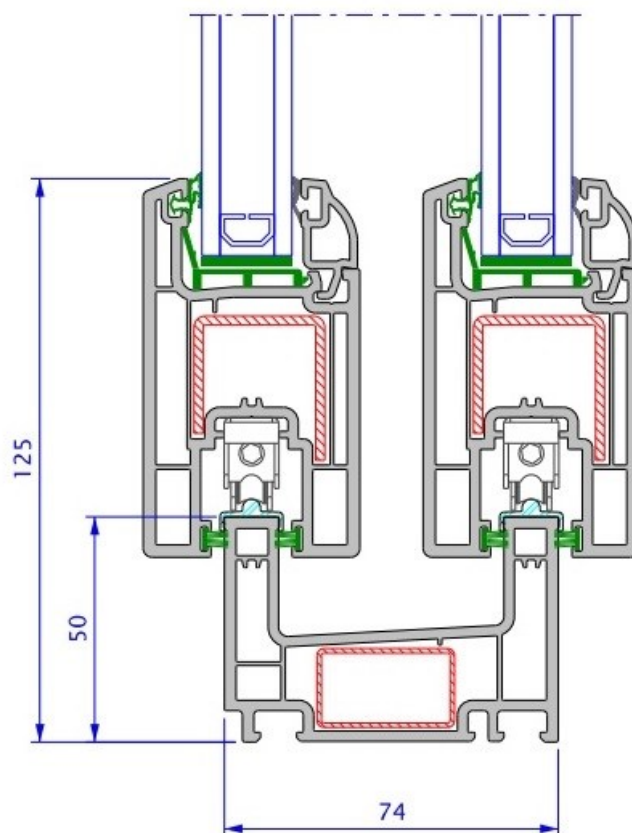
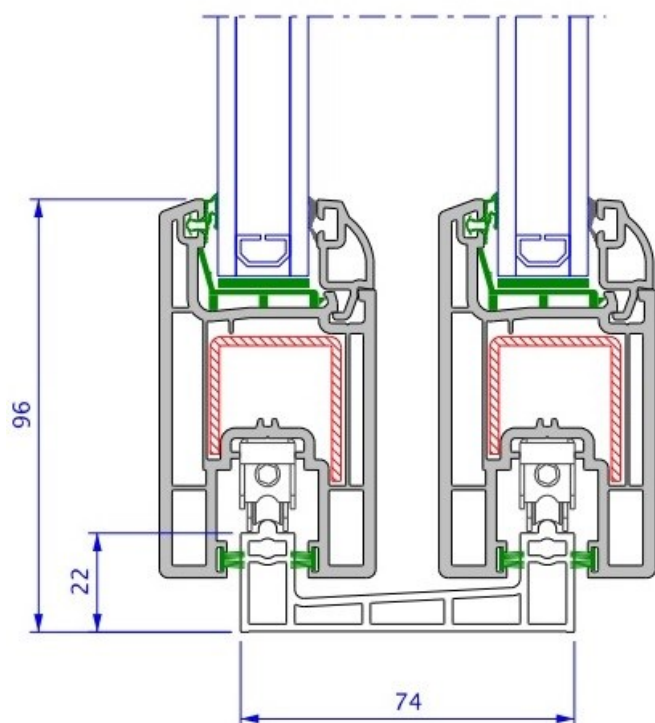
## Technical Features

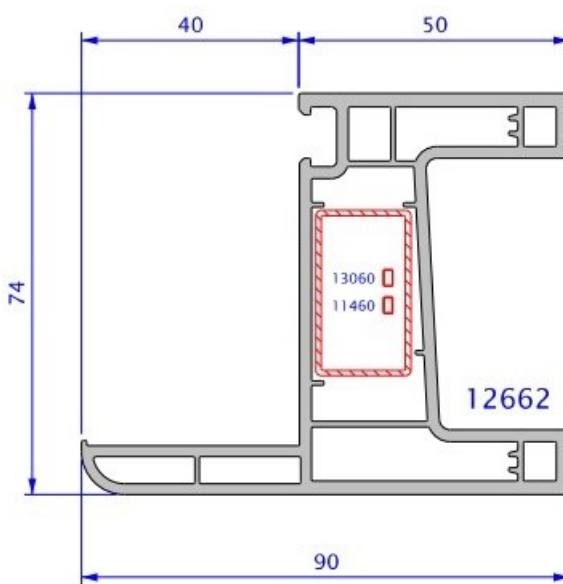
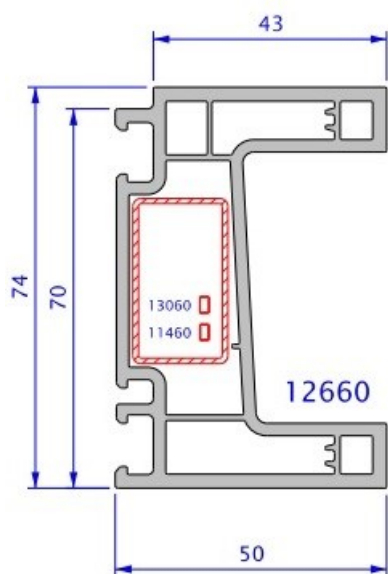
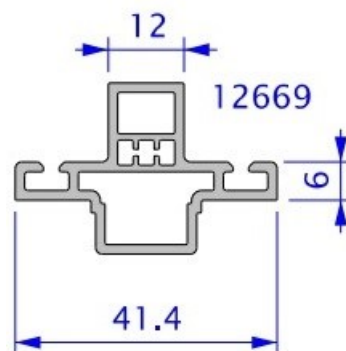
- Gasket: Grey/Black TPE
- Glass thickness: 4;20;24;30 mm
- Opening options: with one sliding rail, with 2 sliding rails, with 3 sliding rails and insect screens, aluminum cladding
- Class: TS 5358 - EN12608 - Class B
- Thermal conductivity coefficient:  $U_f = 2.0 \text{ W/m}^2\text{K}$

## COLORS

Basic (MX) Colours				Solex (FX) Colours			
							
Cherry	Golden Oak	Walnut	Hazelnut	Golden Oak	Hazelnut	Macore	Bronze Platinum
							
Anthracite Grey	Cream	Dark Oak	Black Cherry	Azul	Pyrite	Black Cherry	Ash Black
							
Vison	Antique Oak	Winchester	Winchester Oak	Grey Aluminium	Silver	Asphalt	Anthracite Grey







## Sliding and Translating PVC Doors with Soft Close System

Sliding and translating PVC doors with a soft close system are an excellent choice for those seeking an elegant and practical solution to protect their home from the elements. These doors are made with high-quality materials, such as PVC, which is weather-resistant and durable. They are also equipped with a soft close system, ensuring a quiet and smooth door closure.

### Advantages of Sliding and Translating PVC Doors with Soft Close System:

- **Weather Resistance:** PVC sliding and translating doors are resistant to rain, snow, wind, and UV rays.
- **Durability:** PVC sliding and translating doors are durable and can withstand years of use.
- **Energy Efficiency:** PVC sliding and translating doors can help save energy by thermally insulating the home.
- **Silence:** The soft close system ensures a quiet and smooth door closure.
- **Security:** PVC sliding and translating doors are available with a variety of security systems, such as key locks or locking systems





## **Sliding and Lifting Doors (HST): The Modern Solution for Large Spaces and Glass Panes**

Sliding and lifting doors (HST) are an ideal solution for those who want to create large spaces and glass panes, offering brightness and a modern touch to the home. The lifting and sliding system of the movable part allows for easy, silent, and effortless movement.



### **Trend in Modern Architecture**

There is a trend in modern architecture for residential and non-residential spaces: the need for large spaces, continuous glazed areas, and increased openness to the surrounding environment. At the same time, these spaces must meet energy-saving requirements.



### **HST Doors: An Efficient Solution**

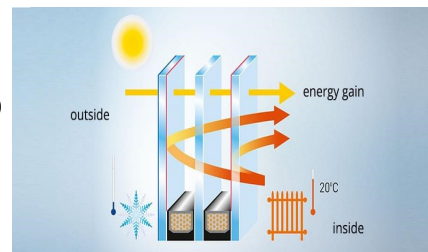
HST doors are an efficient solution to meet these needs. They allow for the creation of open spaces, offering improved natural lighting and a sense of space. Additionally, HST doors are energy-efficient, providing excellent thermal and acoustic insulation.

**Benefits of Sliding and Lifting Doors (HST)** made with Salamander or Deceuninck PVC profiles, insulating glass, aluminum threshold, and special modern hardware:



**Security:** Sliding and lifting doors (HST) are equipped with special security hardware and can be fitted with locking mechanisms and keys, contributing to home security.

**Thermal Insulation:** Sliding and lifting doors (HST) feature high-performance insulating glass with a thickness of up to 48 mm, providing excellent thermal insulation properties that enhance thermal comfort and reduce energy costs for heating or cooling, both in winter and summer.



**Color Options:** HST sliding doors can come in a variety of shades achieved through lamination with mono or wood-effect films, with aluminum coating that can be painted in any RAL color.

**Sound Insulation:** High-quality insulating glass with 2 or 3 glass panes and special HST profiles ensure excellent sound insulation properties, providing an advantage in terms of reducing noise from outside the building.



**Brightness:** Sliding and lifting doors (HST) offer the possibility of being made in very large dimensions with large glass surfaces that allow natural light penetration and panoramic views of the outdoors.





## EvolutionDrive Lift-Slide Door

### Living in a New Dimension

Just as generously sized windows flood your home with light, the new evolutionDrive lift-slide door brings more life to your interior space.

The statically optimized structure allows for large glass surfaces with various types of openings.

The system owes its efficient thermal insulation to optimized sealing levels, particularly in the middle zone, keeping the warmth where it needs to be.






In addition to high-performance functionality, the lift-slide door boasts a burglary resistance certification up to resistance class RC 3. The security mechanism works independently of the hardware used and is compatible with barrier-free threshold systems and threshold systems for renovation.

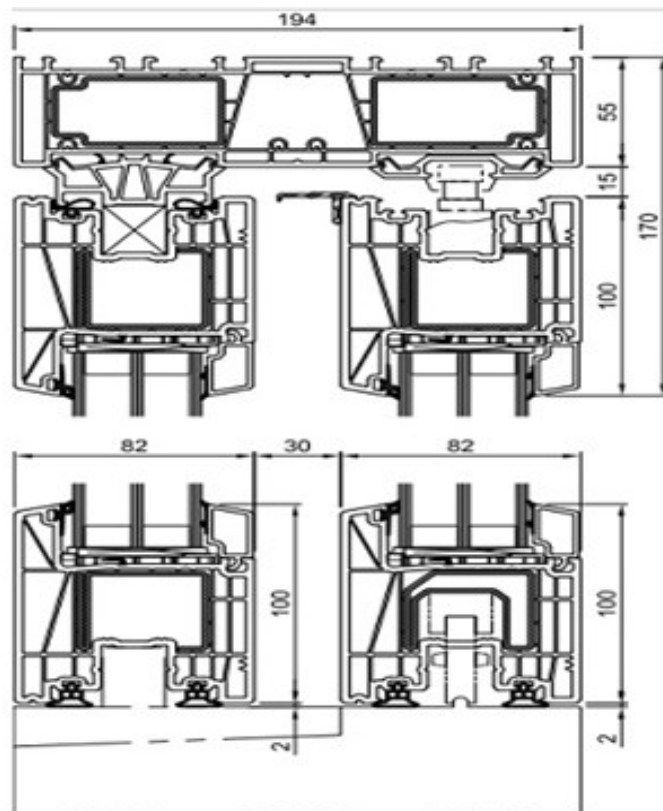
Without compromising on security, the system allows you to meet all the needs of tomorrow, thanks also to the absence of architectural barriers.

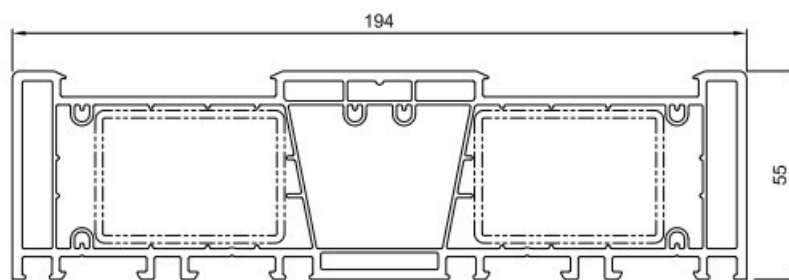




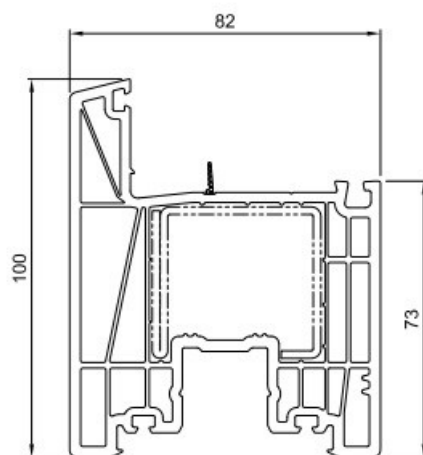
- The sliding system for a feeling of open spaces.
- Barrier-free threshold
- Excellent structural stability with maximum-sized elements.

Thermal insulation	$U_w$ Up to 0,64 W/(m <sup>2</sup> K) $U_f$ Up to 1,3 W/(m <sup>2</sup> K)
Soundproofing	a 43 dB
Security	RC2
Door depth	82 mm
Frame depth	194 mm
Visible door height	100 mm
Visible frame height	55 mm
Maximum dimensions(with standard door)	6.500 mm 2.700 mm
Opening schemes	 Schema A  Schema C  Schema D  Schema G1  Schema K





**HS8050**



**HS8600**

## **A Solution for Every Architectural Style**

Deceuninck's HS76 lift-slide door is simplicity itself. It represents the perfect combination of functionality and aesthetics. It seamlessly integrates with every architectural style, from cottages to villas, apartments to farmhouses, allowing you to furnish your interiors while maintaining your personal taste.

### **Energy Savings**

Thanks to Deceuninck's PVC window technology, you can save up to 68% of energy by avoiding the losses typically produced by traditional fixtures.

### **Sound Insulation**

With Deceuninck's PVC windows, you can reduce the reception of noise and sounds from outside your home.

### **Overcoming Architectural Barriers**

With a low threshold of 20 mm (thermally cut aluminum), Deceuninck's PVC windows of the HS76 system allow for the overcoming of architectural barriers.

### **Premium Security**

Deceuninck's PVC windows offer you security, equipped with high-quality reinforcements and hardware.





## Harmonic Doors for Open Spaces

### Technical Specifications

**Frame Width:** 175 mm

**Leaf Width:** 76 mm

**Number of Chambers:** 8 (frame), 4 (leaf)

**Gasket:** Grey/Black TPE

**Handle:** Hook

**Glass Thickness:** 4, 20, 24, 30, 36, 44 mm

**Class:** EN12608 - Class A



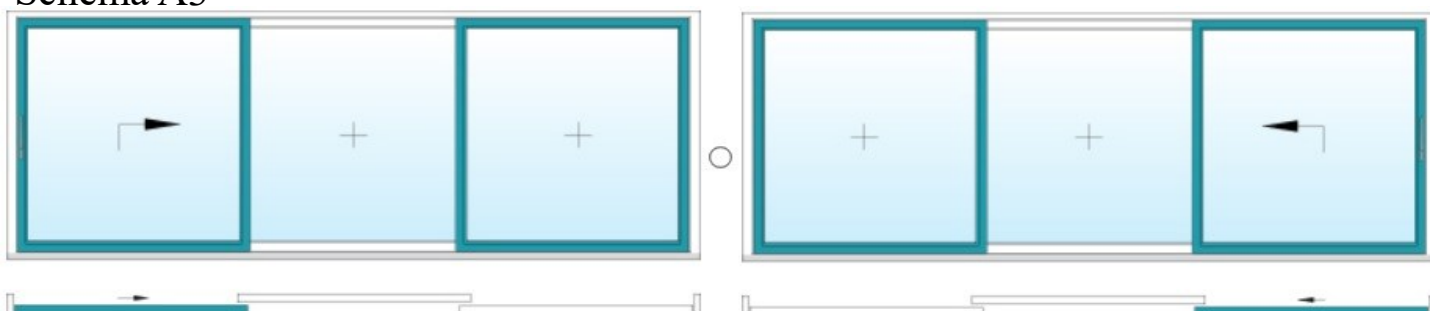
**Thermal Transmittance Coefficient:**  $U_w = 1.2 \text{ W/m}^2\text{K}$

Legno al naturale (FOILED ORIGINAL WOOD)		Legno tinto (FOILED COLOUR)	
020 Quercia naturale	C23 Oregon	009 Bianco cristallo	079 Blu acciaio
145 Quercia irlandese	656 Amaretto	010 Bianco caldo	076 Rosso vino
146 Ciliegio rustico	663 Noce di Sorrento	095 Avorio	027 Rosso
109 Ciliegio selvatico		004 Grigio	134 Muschio
110 Ciliegio	<b>Metallizzati (FOILED METALLIC)</b>	003 Marrone scuro	545 Blu scuro
154 Noce	116 Bronzo chiaro	083 verde salvia	
025 Quercia scuro	119 Bronzo spazzolato	006 verde scuro	
111 Mogano	138 Bronzo	071 Blu brillante	<b>Liscio (FOILED SMOOTH)</b>
144 Macassar	139 Argento	063 Grigio cuarzato	546 Avorio chiaro
113 Grigio cedro	658 Alluminio spazzolato	667 Grigio basalto	021 Cenero
402 Douglas		072 Grigio antracite	502 Grigio ombra
425 Rovere grigio		665 Grigio silice	

Schema A



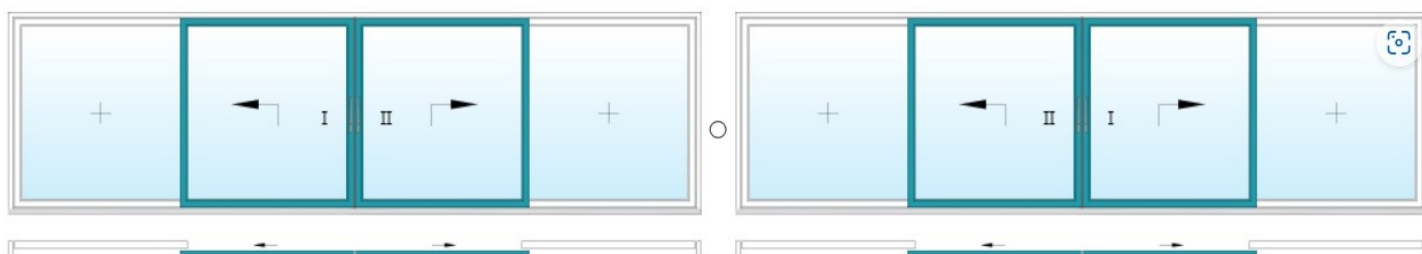
Schema A3



Schema G1



Schema C



Schema K



## Harmonic Doors for Open Spaces

Harmonic doors are an ideal solution for spaces that require a wide opening to the outside without obstacles. They consist of multiple panels that fold harmoniously, moving upwards and laterally.

### Advantages of harmonic doors:

**Open space:** Harmonic doors allow for creating open spaces, providing increased natural light and a sense of openness.

**Thermal and acoustic insulation:** Harmonic doors are equipped with thermal and acoustic insulation systems that help save energy and improve acoustic comfort.

**Versatility:** Harmonic doors can be used in various environments, both indoors and outdoors.

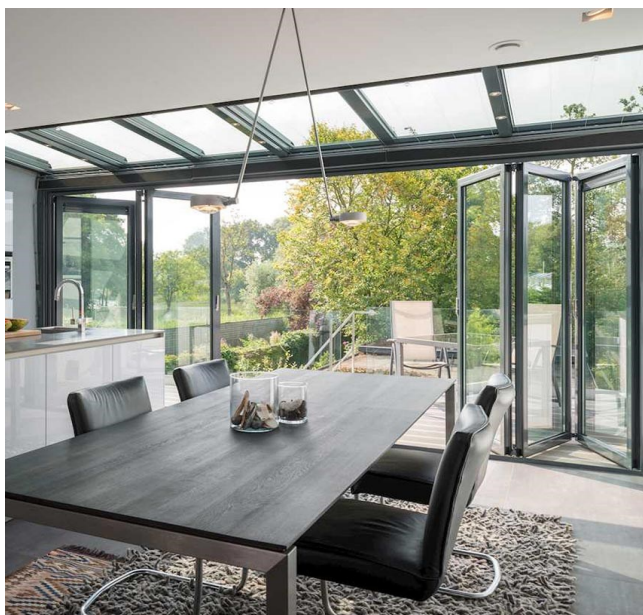




## Examples of Use:

### Terraces:

Harmonic doors are ideal for terraces, as they allow for a complete opening to the outside without obstacles.



### Winter Gardens:

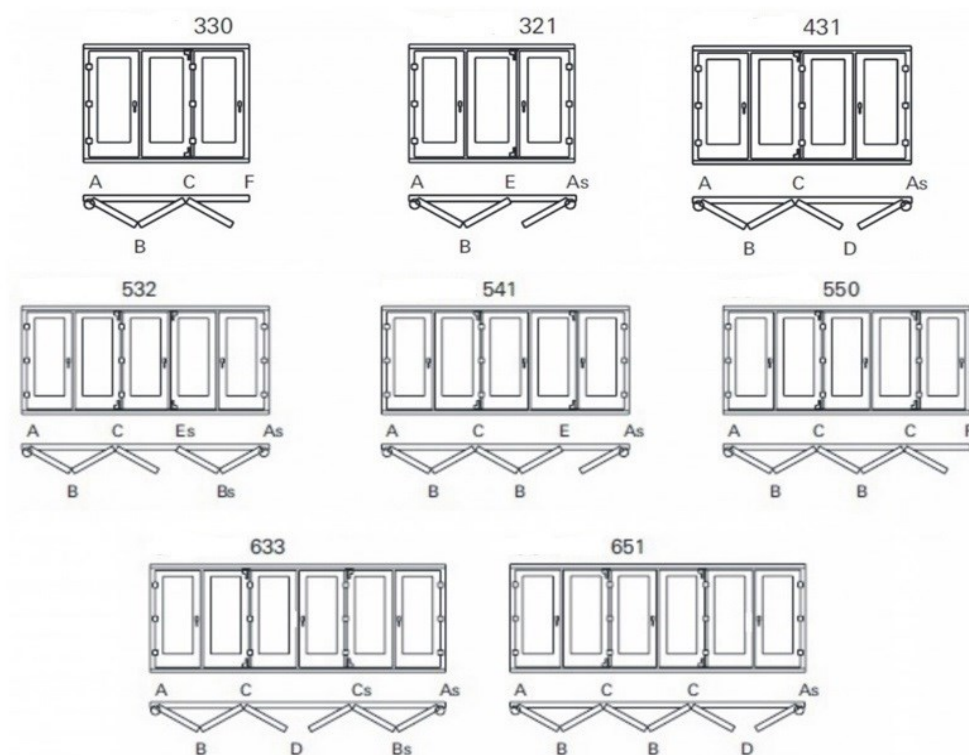
Harmonic doors are an excellent solution for winter gardens, as they allow natural light to enter and provide easy access to the outdoors.

### Conference Rooms:

Harmonic doors are a versatile solution for conference rooms, as they can be used to create open or separate spaces, depending on the needs.



## Scheme

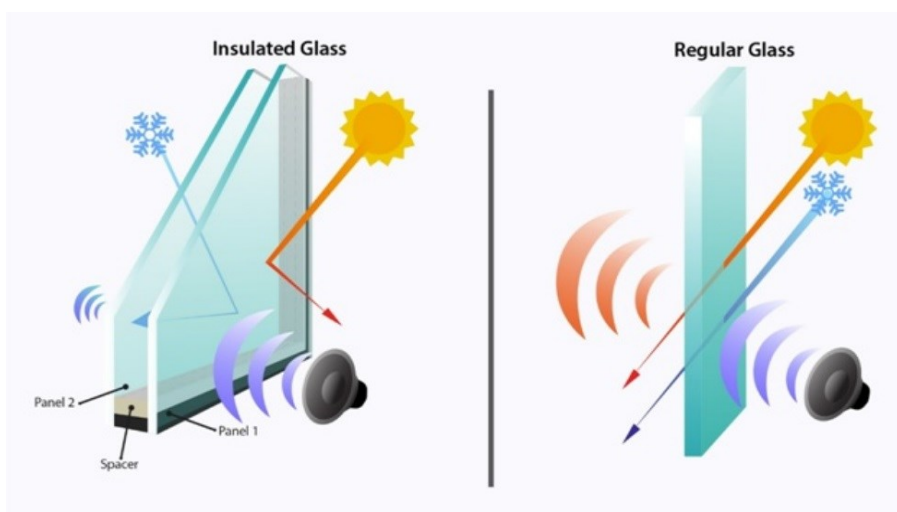


## Glass Packages for PVC Windows

Glass packages with 2 or 3 panes are an ideal solution for improving the thermal insulation, soundproofing, and impact resistance of PVC windows.



### Glass Packages with 2 Panes

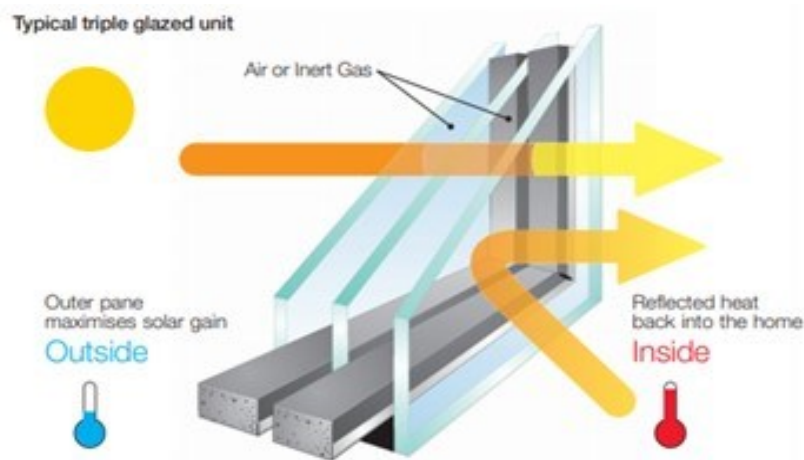


Glass packages with 2 panes consist of two separate glass panes separated by a spacer.

They offer better thermal and acoustic insulation compared to single-pane glass, but not as good as packages with 3 panes..

### Glass Packages with 3 Panes

Glass packages with 3 panes consist of three separate glass panes separated by two spacers. They offer the best thermal and acoustic insulation, as well as greater strength..





## Types of Glass

### Float Glass:

Float glass is a type of flat glass produced through a process in which molten glass is floated on a bath of molten metal (typically tin) to produce uniform and consistent thickness, flatness, and surface quality. This process results in high optical clarity, making it suitable for a wide range of applications, including windows.



### Low-E Glass:

Low-E coatings on architectural glazing can help control the temperature inside a building by providing various levels of thermal insulation and/or solar control. Low-E glazing can allow plenty of natural light into interior spaces, improving occupant comfort while also enhancing the energy efficiency of the building. Low-E coatings also offer architects a wide range of aesthetic options in terms of colors, allowing them to select the most appropriate appearance for their project.

### Laminated Glass:

Laminated glass consists of two or more glass panes permanently bonded together with one or more polymer interlayers through heat and pressure. The glass and interlayers are available in a variety of colors and thicknesses, providing the desired appearance and performance to meet relevant building standards and customer needs.

While float glass provides an excellent base product, laminating glass can add additional properties and benefits such as safety, protection, sound control, UV protection, and color. Laminated glass products make float glass suitable for today's demanding architectural applications such as noise reduction, hurricane impact resistance, blast mitigation, burglary resistance, protection from shattered glass, or a combination of these.



## Solar Glass:

Solar glass is a special type of glass treated with a layer of metal or oxide to reflect sunlight, thereby reducing heat entry into buildings. This can help reduce energy costs for heating and cooling, improve indoor comfort, and protect furniture and other objects from fading.



## Sandblasted Glass:

Sandblasted glass is a type of glass with an opaque surface, achieved by bombarding it with a stream of fine sand, aided by compressed air. This process can be performed either mechanically or chemically. Sandblasted glass is used in various applications, including:

**Decoration:** Sandblasted glass can be used to create decorative motifs or textures on the glass surface.

**Privacy:** Sandblasted glass can be used to create a barrier to visibility without completely blocking light.

**Safety:** Sandblasted glass can be used to reduce the risk of injury in case of glass breakage.

In insulated glass units, sandblasted glass is primarily used to create a decorative appearance. Sandblasted glass can be used to create geometric, floral, or abstract patterns, which can impart a unique and personalized look to windows or doors.



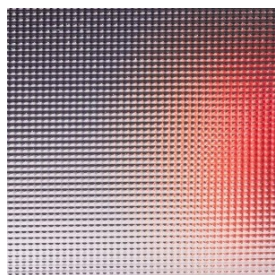


**Decorative Glass:** Decorative glass is a type of glass primarily used for decorative purposes. It is available in a variety of types and patterns, which can be used to create a unique and personalized look for any space.

### Types of Decorative Glass:

There are various types of decorative glass available, including:

- **Krizet Glass:** Krizet glass has a surface with a crocodile skin appearance. This texture is achieved by applying an acid layer to the glass surface.
- **Delta Glass:** Delta glass has a surface with a honeycomb appearance. This texture is achieved by applying an acid layer to the glass surface.
- **Screen-Printed Glass:** Screen-printed glass has a pattern printed on the surface. This pattern is created by applying an image to the glass surface using a screen printing machine.



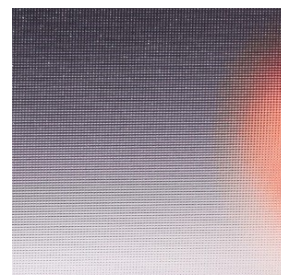
K1



K2



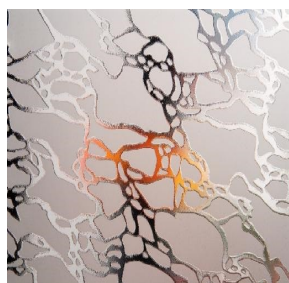
K3



K4



K5



K6



K7



K8



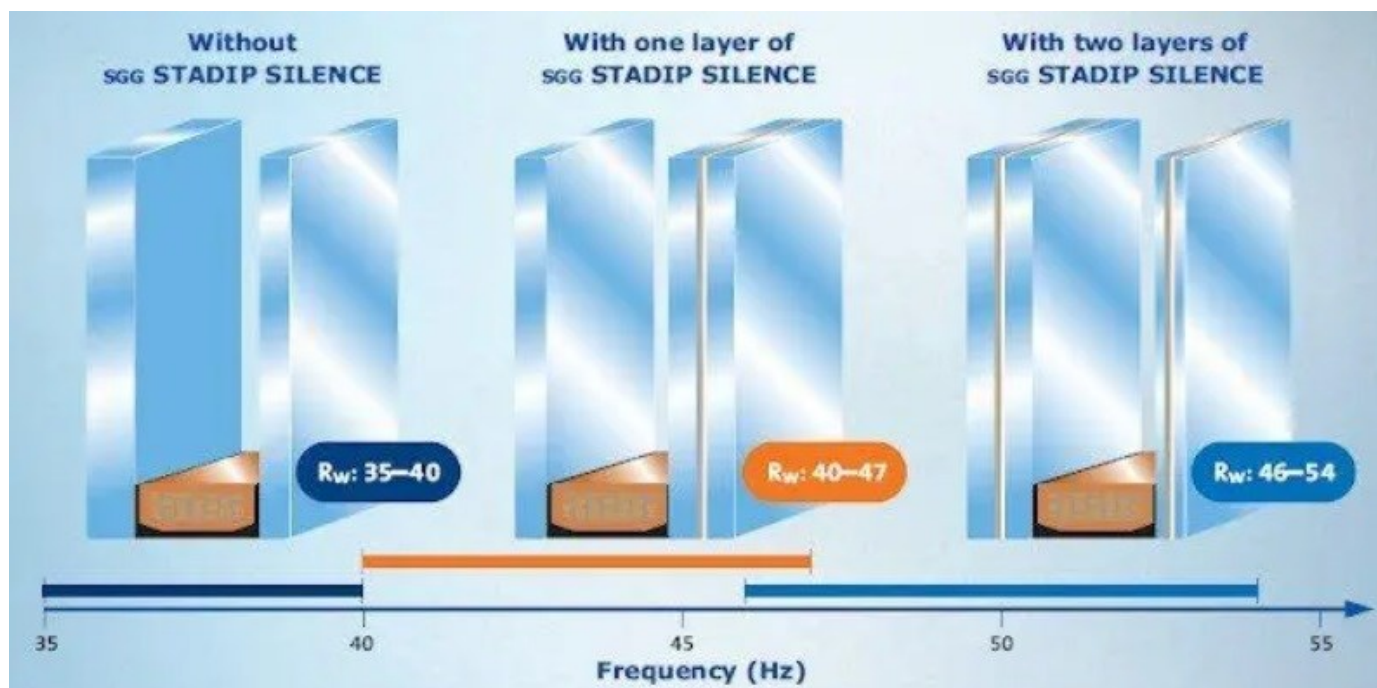
**Soundproof Glass:** Soundproof glass is a type of glass designed to reduce the transmission of noise. It is used in a variety of applications, including:

- \* **Windows:** Soundproof glass can be used to reduce noise from traffic, construction, or other sources.
- \* **Doors:** Soundproof glass can be used to reduce noise in conference rooms, recording studios, or other spaces where quietness is necessary.
- \* **Walls:** Soundproof glass can be used to create soundproof walls.

### Principle of Operation:

Soundproof glass works by reducing sound vibrations. This can be done in several ways, including:

- \* **Using layers of glass of different thicknesses:** Layers of glass of different thicknesses vibrate in different ways, which helps to reduce noise.
- \* **Using a layer of absorbing material:** A layer of absorbing material, such as foam or rubber, is placed between the glass layers. This material absorbs sound vibrations, thus reducing noise.
- \* **Using a layer of film:** A special film is applied to the glass surface. This film reflects sound vibrations, thus reducing noise.



## G-U Hardware for PVC Doors and Windows



G-U hardware is an essential component of any PVC door or window. It ensures proper functionality and durability of the products, while also providing a high level of security and comfort.

### G-U Product Range:

The G-U product range includes a variety of hardware systems for PVC doors and windows, which can be adapted to any application. These include:

- **Hardware for hinged doors:** This is the most common form of hardware for doors, used for entrance doors, interior doors, and balcony doors.
- **Hardware for sliding doors:** This hardware is used for sliding doors, which offer space-saving benefits.
- **Hardware for hinged windows:** This hardware is used for skylight windows, bathroom windows, and kitchen windows.
- **Hardware for tilt and turn windows:** This hardware allows windows to open both inward and outward, providing efficient ventilation.
- **Hardware for tilt and slide windows:** This hardware is used for skylight windows and balcony windows.



## Advantages of G-U Hardware

**Durability:** G-U hardware is made from high-quality materials, ensuring long-term durability.

**Security:** G-U hardware provides a high level of security, including protection against intrusions.

**Comfort:** G-U hardware ensures easy and silent operation of doors and windows.



## Window Opening, Tilting, and Closing

The new surface-mounted UNI-JET hinge impresses with its cohesive and elegant design that harmoniously integrates with modern window frames: the high-quality surface, for example, painted in white or in ferGUard\* silver, shows no visible screws or pins.

UNI-JET can support sash weights of up to 200 kg and full-height sashes up to a height of 2800 mm, without requiring additional components and with an identical visual appearance. Smooth movement in opening and closing is also ensured up to security level RC 3.



WINDOW TECHNOLOGY  
DOOR TECHNOLOGY  
AUTOMATIC ENTRANCE SYSTEMS  
BUILDING MANAGEMENT SYSTEMS





**GU-SECURY EUROPA R4**

- The four adjustable cams of the roller optimize the pressure of the gasket in the upper and lower areas of the door, providing better sealing for improved thermal and acoustic insulation.
  - The locking is not done via a key but by lifting the door handle upwards; this allows for a much better force transmission to overcome the resistance of the frame gasket.
  - It is impossible to accidentally break the key.
  - Easy locking even if the door is deformed.
  - For lock types: Multipoint locks
  - Number of door leaves: one leaf, two leaves
  - Function: Standard function
  - Central lock: Manual lock
- Opening from the outside: Keys and handles

**KFV®**

Ein Unternehmen der SIEGENIA GRUPPE

**KFV:2600BS**

BS 2600 is a multipoint lock equipped with bolt locking points. The Softlock locking tongue ensures a quiet door closure and can be easily replaced with the wheel.

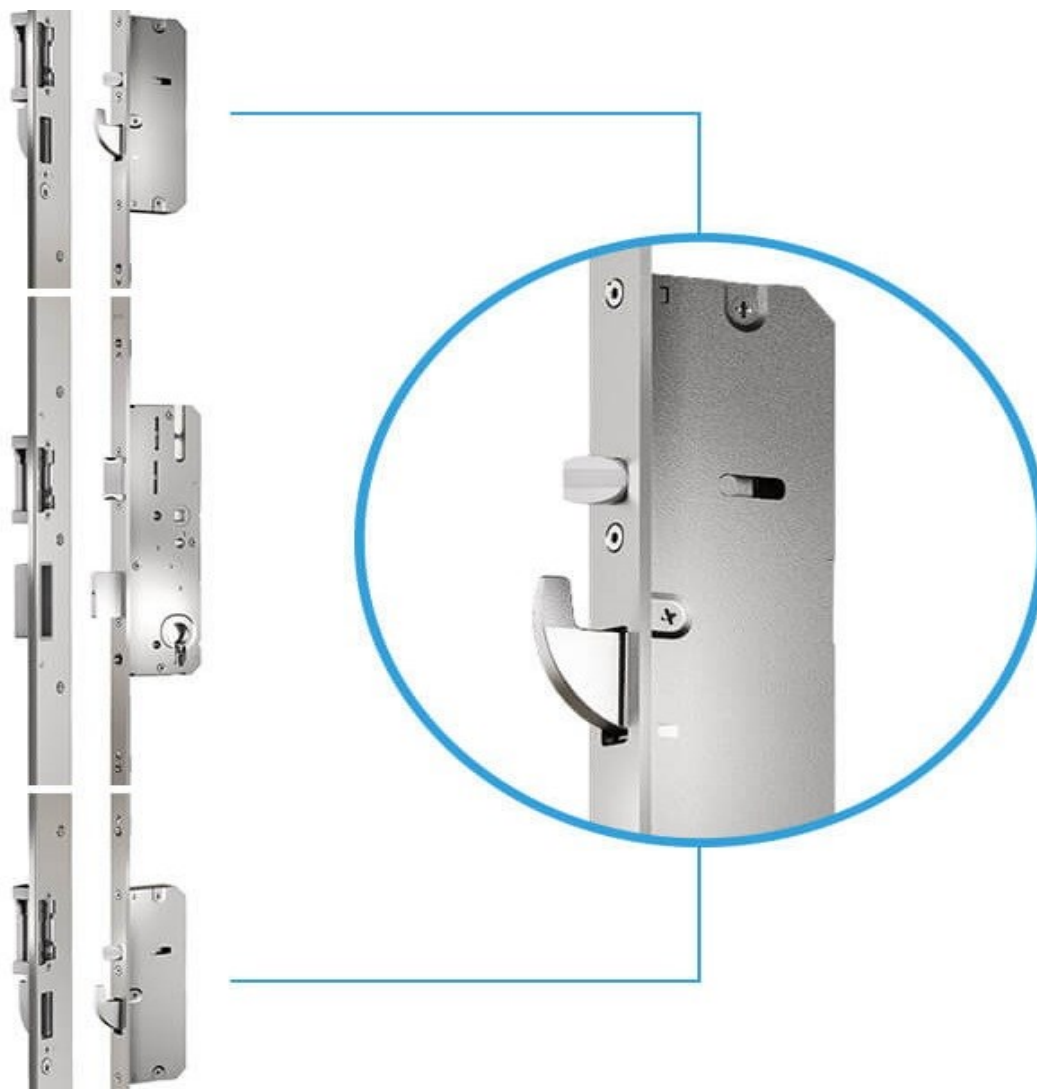
It complies with resistance class RC 3 according to EN 1627–1630

## Ferramente multipunto KfV semiautomatiche:

### AS 2750

Oltre alla linguetta di chiusura principale, la serratura multipunto AS 2750 è dotata di due chiavistelli aggiuntive Softlock a molla, per sigillare la porta per tutta l'altezza, senza che la serratura sia chiusa a chiave, garantendo una protezione permanente contro la deformazione e una chiusura silenziosa della porta.

La chiusura è assicurata con ganci, e con la serratura centrale si ottiene la classe di resistenza RC 3 secondo EN 1627–1630.





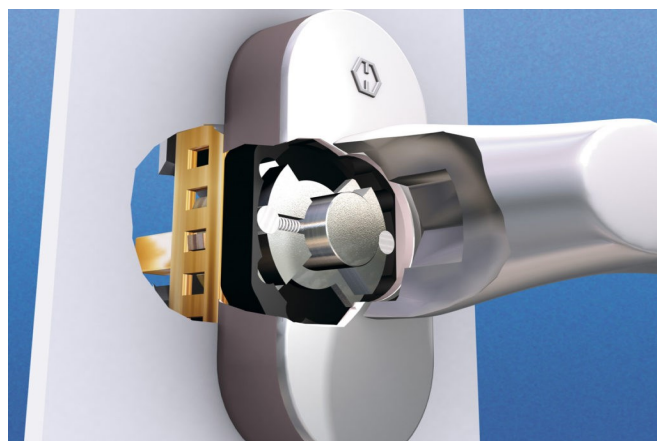
Hoppe is a global leader in the production of hardware for doors and windows. Hoppe handles are made of high-quality materials and designed to offer easy and comfortable operation, as well as a high level of security.

### Features:

- **Durability:** Hoppe handles are made of aluminum or stainless steel, ensuring long-lasting performance.
- **Security:** Hoppe handles provide a high level of security, including protection against intrusions.
- **Comfort:** Hoppe handles are easy to operate and offer a comfortable grip.
- **Design:** Hoppe handles are available in a variety of models and colors to fit any interior style.

### Secustik® - The handle for windows with integrated security that you can feel.

Hoppe Secustik® window handles contain a locking device that provides integrated security. This makes it more difficult to move the window from the outside illegally. It works thanks to a coupling element that acts as a mechanical diode. This allows normal use of the window handle from the inside but locks the handle if someone tries to turn it from the outside through the window. When the handle is turned 180 degrees from the closed position to the tilt position, the locking device emits a series of clicks, proof of the integrated security that you can feel.





Hoppe TOULON

Hoppe STUTTGART

Hoppe NEW YORK

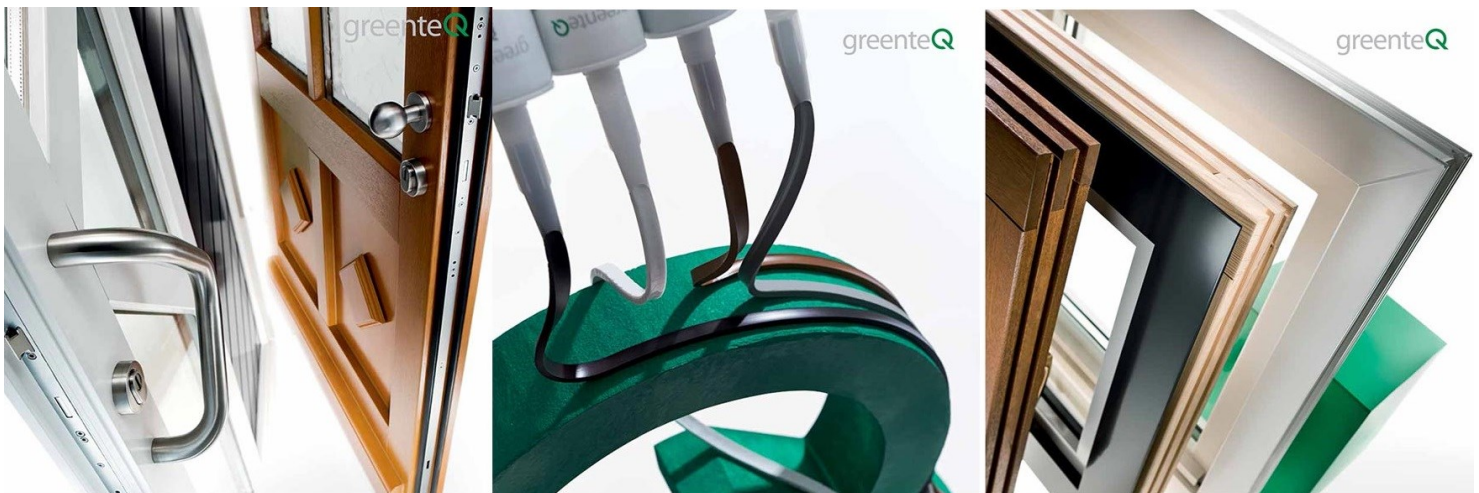


Colors

**greenteQ**

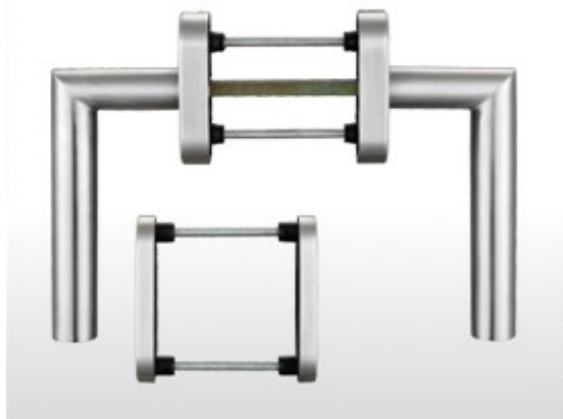
GreenTeq offers a wide range of PVC door handles that fit any style and budget.

The handles are available in different materials, finishes, and sizes to suit any door



## Door window handles

### INX 4



- **Locking position :** -
- **Square spindle :** 7 mm
- **Cylinder diameter :** 10 mm
- **External rosette of the window handle:** 29 x 68 x 8 mm
- **Internal rosette of the window handle :** 29 x 66 x 13 mm
- **External rosette of the key :** 29 x 85 x 8 mm
- **Internal rosette of the key :** 29 x 80 x 8 mm
- **Screws :** 2x M5x70; 2x M5x75; 2x M5x80 mm

### RTM 16



- **Locking position :** 90°
- **Square spindle :** 7 mm
- **Cylinder diameter :** 10 mm
- **Window handle rosette :** 30 x 72 x 13 mm
- **Key rosette :** 30 x 80 x 8 mm
- **Holes on both sides :** Viti PZS
- **Screws: incl. .** 4x M5x80; 2x M5x75 mm

### SPT 12



- **Locking position :** -
- **Square spindle :** 7 mm
- **Cylinder diameter :** 10 mm
- **External rosette of the window handle:** : 29 x 68 x 8 mm
- **Internal rosette of the window handle :** 29 x 66 x 13 mm
- **External rosette of the key :** 29 x 85 x 8 mm
- **Internal rosette of the key :** 29 x 80 x 8 mm
- **Screws :** 2x M5x70; 2x M5x75; 2x M5x80 mm

## INX 4

**Matte brushed**

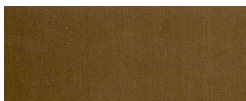


## SPT 12

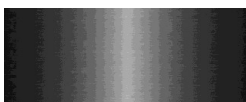
**Anodized silver (F1)**



**Anodized bronze (F4)**



**Dark silver anodized (F9)**



**Painted white (F9016)**



**Painted brown (F8077)**

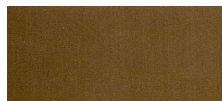


## RTM 16

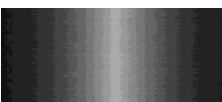
**Anodized silver (F1)**



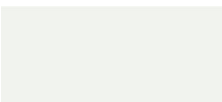
**Anodized bronze (F4)**



**Dark silver anodized (F9)**



**Painted white (F9016)**



**Painted brown (F8077)**



## Door Handles

**STV 92** is made of aluminum and has a 35 mm wide plate. The lever handle set is PZ punched with a distance of 92 mm.

The crank handle fixed on the external plate is mountable. The lever handle on the internal plate is fixed/pivoting and has a spring mechanism. STV 92 is equipped with an 8 mm square pin.

The external lever handle has tabs on the back plate and is fastened by means of an invisible screw connection that requires a separate accessory set (3 M6 screws, 1 8 mm square pin).





**BTM 92** is made of aluminum and has a 35 mm wide plate.



The lever handle is perforated with a PZ at a distance of 92 mm. The lever handle on the external plate is low. The lever handle on the internal plate is fixed/rotating and has a spring mechanism.

BTM 92 is equipped with an 8 mm square pin. The external lever handle has tabs on the backplates, and the fastening is done through an invisible screw connection that requires a separate accessory set (3 screws M6, 1 square pin 8 mm).

**TS 92** is equipped with an 8 mm square pin. The external lever handle has tabs on the backplate, and the fastening is done through an invisible screw connection that requires a separate accessory set (3 screws M6, 1 square pin 8 mm).

The greenteQ lever handle set for TS 92 frame doors is made of aluminum and has a 35 mm wide plate.

The lever handle set is perforated with a PZ at a distance of 92 mm. The crank handle fixed on the external plate is mountable. The lever handle on the internal plate is fixed/rotating and has a spring mechanism.



### STV 92

Anodized silver

Anodized gold

Anodized bronze

Painted white

Painted brown

### BTM 92

Anodized silver

Anodized gold

Anodized bronze

Painted white

Painted brown

### TS 92

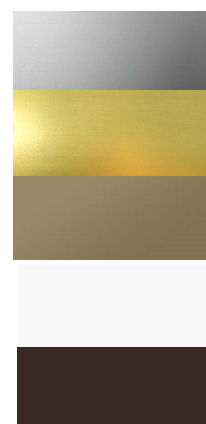
Anodized silver

Anodized gold

Anodized bronze

Painted white

Painted brown

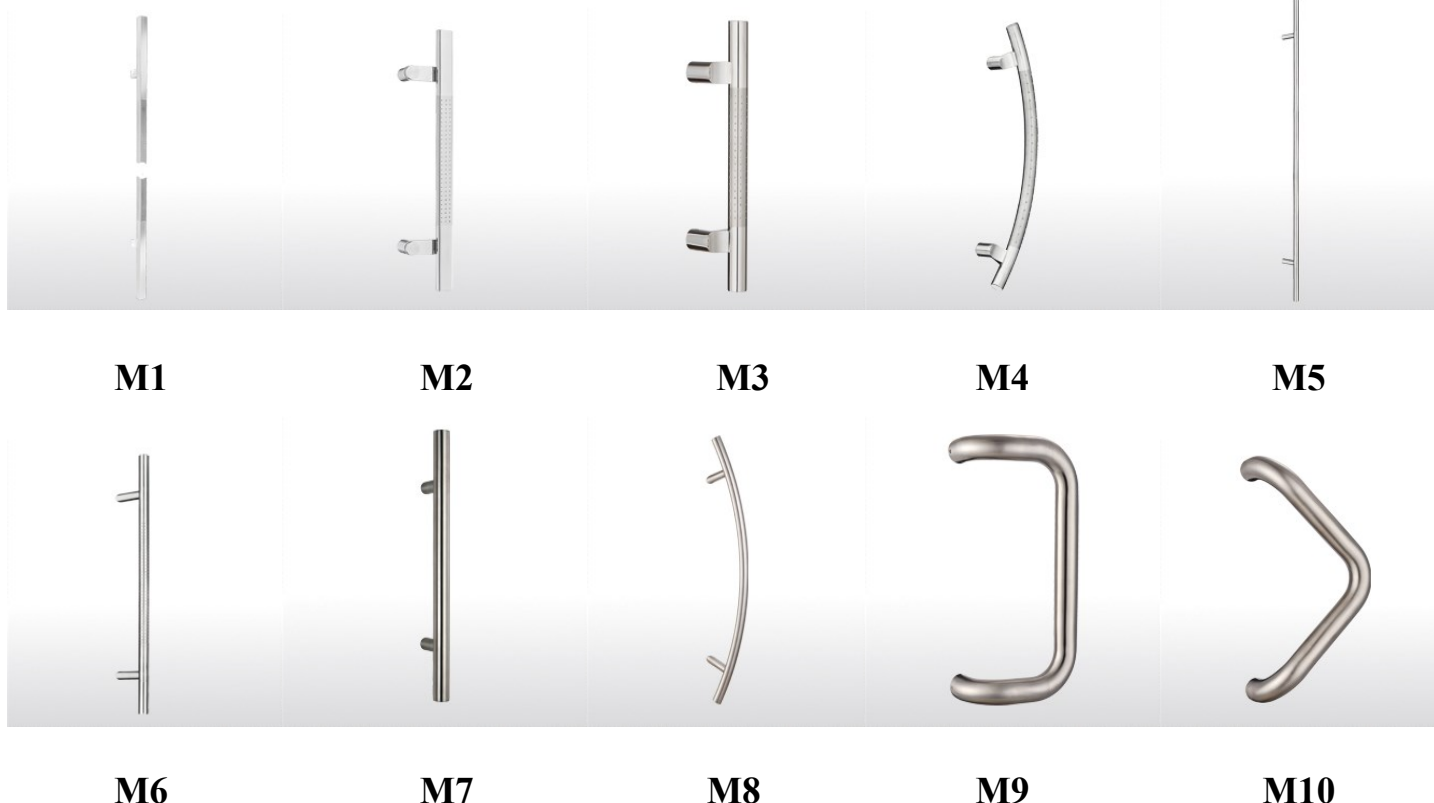


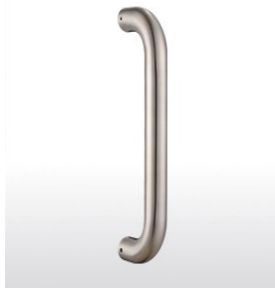
## Door pull handles

GreenteQ stainless steel pull handles can be used on single or double door leaves, both internally and externally. They are available in a variety of shapes and sizes to suit any design style and door material (wood, plastic, aluminum, and glass).

The material, stainless steel 1.4301 (AISI 304-A2), has good resistance to atmospheric corrosion, is highly resistant to weak acids, and has been tested and approved by building authorities for moderate pollution from chloride and sulfur dioxide.

This makes it a versatile and durable material for door handles that can be used in virtually any environment.



**M11****M12****M13**

## Door hinges

VBH has introduced the new greenteQ TB 120.ZD.K door hinge, an adjustable PVC door hinge in 3 dimensions with a door leaf weight of up to 120 kg.

It is ideal for household doors subject to heavy use and frequent openings.

The hinge can be used for doors that open inwards or outwards and can be mounted on the left or right. It has a simple stop and easy adjustment.

The greenteQ door hinge is available in white, brown, pearl gold, polished chrome, polished gold, or silver. It is made of zinc die-casting, a durable and sturdy material.

The hinge is designed to withstand heavy use in key usage areas. It is certified in accordance with EN 1935, a European standard that sets minimum requirements for door hinges.





## **External Aluminum Shutters: The Ideal Solution for Your Home or Commercial Space**

External aluminum shutters are an ideal solution for any residence or commercial space. They offer several advantages, including:

### **- Thermal and Acoustic Insulation:**

External aluminum shutters help reduce heat loss in winter and maintain a cool environment in summer. Additionally, they provide excellent protection against external noise.

### **- Sunlight and Intrusion Protection:**

Aluminum shutters can be used to block sunlight and provide privacy.



**- Security:** External aluminum shutters can be equipped with security systems to help prevent intrusions.

External aluminum shutters are available in a variety of colors and sizes, allowing you to find the perfect solution for your needs.

In addition to the advantages mentioned above, external aluminum shutters are also durable and easy to maintain.

If you are looking for an efficient and reliable solution for your windows and doors, external aluminum shutters are an excellent choice.

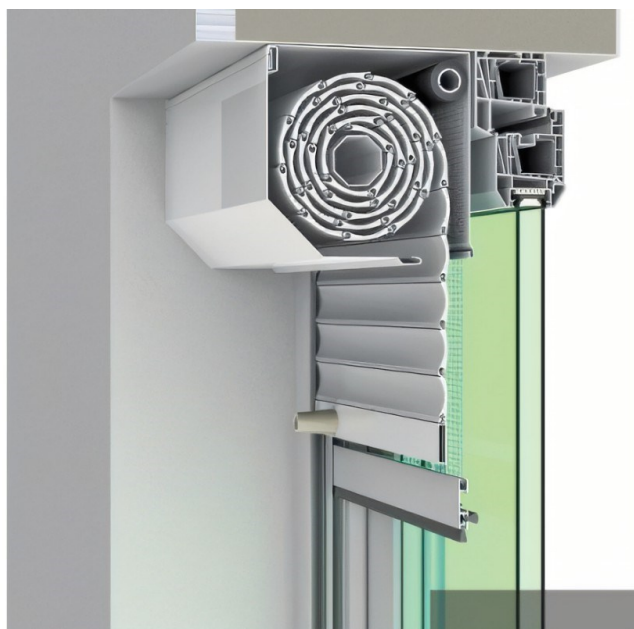
## Types of shutters:

### External box roller shutters in aluminum:

These are a type of shutters that are mounted outside the window.

The shutters are made of aluminum and filled with polyurethane foam to provide improved thermal and acoustic insulation.

The box and guides are also made of aluminum and powder-coated to provide corrosion resistance



### Built-in roller shutters with applied box:

These are a type of shutters that are mounted on the exterior side of the window, inside the wall. They are an excellent solution for new constructions as they can be seamlessly integrated into the building's design.

### Features:

Built-in roller shutters with applied box are made of aluminum and are available in a variety of colors and sizes. The slats of the shutters are filled with polyurethane foam to provide improved thermal and acoustic insulation.



### Advantages:

- They offer excellent protection against sunlight, noise, and intrusions.
- They are durable and easy to maintain.
- They seamlessly integrate into the building's design.

## Overlapping roller shutters with surface-mounted box:

These are a type of shutters that are mounted on the exterior side of the window, above the frame. They are an excellent solution for renovations as they can be installed without the need to replace the window frame.

### Features:

Overlapping roller shutters with surface-mounted box are made of aluminum and are available in a variety of colors and sizes. The shutters are filled with polyurethane foam to provide improved thermal and acoustic insulation.

### Advantages:

They offer excellent protection against sunlight, noise, and intrusions.

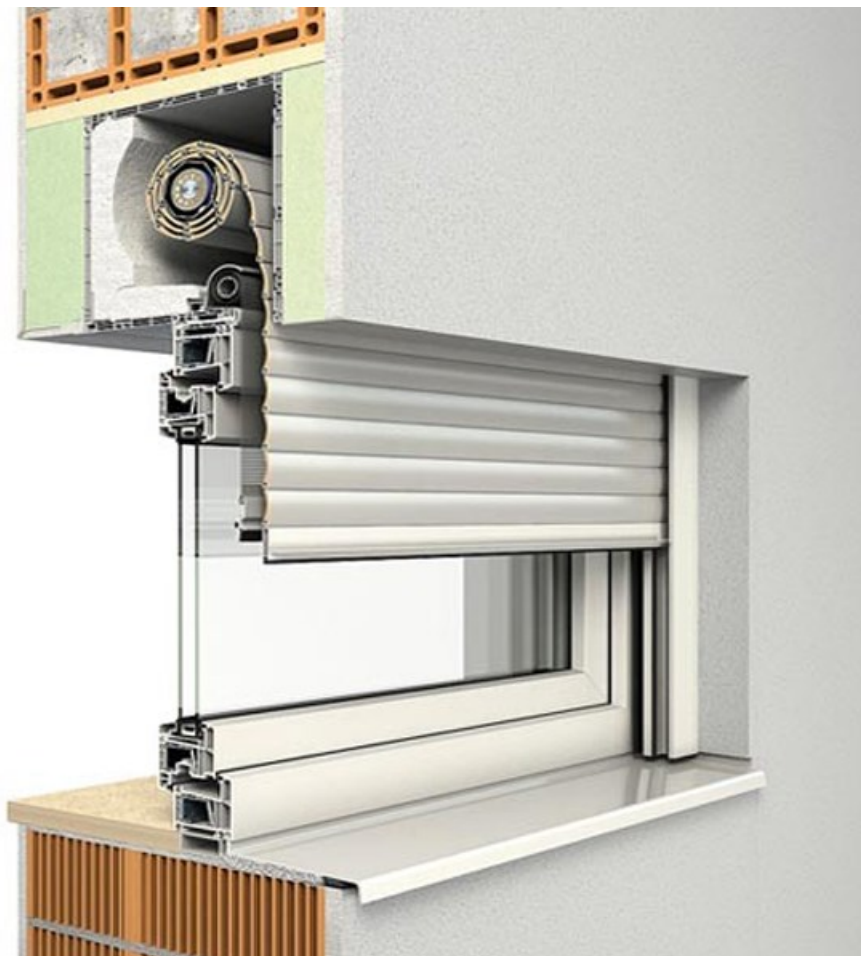
They are durable and easy to maintain.

They can be installed without the need to replace the window frame.

### Disadvantages:

They may be more expensive than other types of shutters.

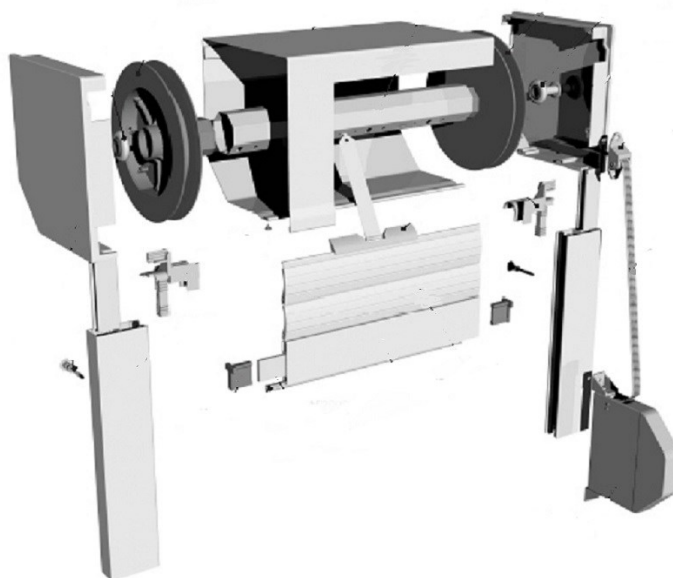
They may be more difficult to install than other types of shutters





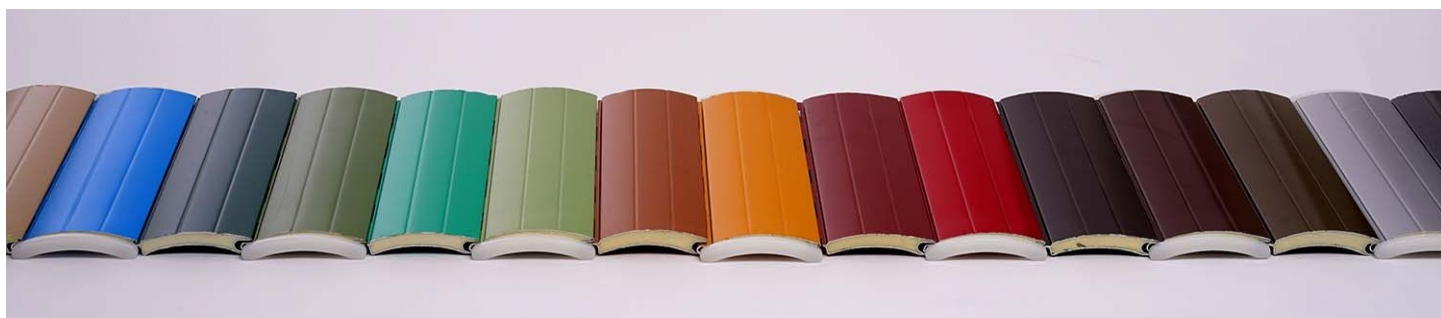
## Characteristics of external surface-mounted roller shutters in aluminum:

- Aluminum slats with dimensions of 39 mm, 45 mm width, and 9 mm thickness.
- The slats are filled with CFC-free polyurethane foam (does not harm the ozone layer).
- The box and guides are made of aluminum.
- Steel axle with a diameter of 40 or 60 mm depending on the size of the shutter.
- Manufacturer's warranty for paint corrosion resistance is 10 years.
- Wind resistance: Class 1 to Class 6.
- Thermal coefficient  $U_f = 0.73 \text{ W}/(\text{m}^2 \cdot \text{K})$ .
- By installing external shutters, external noise can be reduced by up to 10 dB.



External roller shutters in aluminum can be operated manually with a cord/strap, crank handle, electrically with a switch or remote control, as well as variants equipped with wind, light, or preset time opening/closing sensors.

## COLORS



## Sliding glass closures

Sliding glass closures are a versatile and elegant solution that can be used to create open and bright spaces.

They are available in a wide range of sizes, shapes, and designs to fit any space.

These closures are made of an aluminum frame, within which glass panels are mounted to slide on tracks.



The dimensions of sliding glass closures can range from 1.5 linear meters to 6 meters, without intermediate columns.

A system consists of multiple sliding glasses that can be combined in various ways to create a variety of configurations.



The heights of the sliding glass closures can vary from 1.5 meters to 2.6 meters. The glass can have a thickness of 8 or 10 mm.

The glass and aluminum profiles that support the glass can be customized according to your preferences. You can choose colors, textures, and patterns to match the style of your home.

To increase security, you can opt for a locking system.

Here are some advantages of sliding glass closures:

**Acoustic Protection****Thermal Protection****Wind Protection****Rain Protection****Panoramic View Outwards****Security - optional lock closure****Increase the annual usage lifespan of the terrace****Maintains the illuminated space**



## Aluminum joinery: a durable and versatile material for any type of construction

Aluminum joinery are one of the most popular choices for residential and commercial buildings. This is due to a wide range of advantages they offer, including:

- **Durability:** Aluminum is a highly durable material that can withstand weather conditions and wear. This makes aluminum fixtures an excellent choice for projects requiring long-term durability.

- **Corrosion resistance:** Aluminum does not rust, making it an excellent choice for areas with a humid or marine climate. This reduces maintenance and repair costs.

- **Thermal and acoustic insulation:** Aluminum can be combined with insulating materials to create windows and doors that offer excellent insulation. This can help reduce heating and cooling costs.

- **Versatile design:** Aluminum can be shaped into various shapes and sizes, offering great design flexibility. This allows designing windows and doors that perfectly fit the architectural style of your building.



Aluminum joinery can be used for a wide range of applications, including:

Windows and doors for residential and commercial buildings

Partition walls

Balconies and terraces

Shading systems

## Discover Elegance and Durability with Aluminum Joinery

Welcome to the refined world of aluminum joinery, where contemporary design meets top performance and long-lasting durability. With extensive experience in the industry, we are proud to present to you a diversified range of aluminum products designed to meet the most demanding standards of quality and aesthetics.

### Elegance and Versatility

Aluminum joinery impresses with its simple and modern elegance, adding a touch of refinement to any type of space. With clean lines and impeccable finishes, these products are designed to integrate perfectly into a variety of architectural styles, from classic to contemporary. Whether it's windows, doors, or sliding systems, aluminum joinery offers unparalleled versatility, adaptable to any need and preference.

### Performance and Durability

Another essential aspect of aluminum joinery is its exceptional performance and long-lasting durability. Built to withstand weather conditions, corrosion, and wear, our aluminum products are guaranteed to provide protection and comfort in any weather conditions. Additionally, aluminum is a recyclable material, thus contributing to environmental protection and promoting a sustainable lifestyle.

### Customized Solutions

At Winkelbau, we understand that each project is unique, and our clients' needs are diverse. Therefore, we offer personalized solutions for aluminum joinery, tailored to each space and budget.



## EXALCO Albio 109C

ALBIO 109C is a thermal break aluminum fixture system that offers excellent thermal and acoustic insulation. The system is designed to meet a wide range of functional and aesthetic needs, while also meeting the highest standards in construction and energy efficiency.

### Key Features:

- Superior thermal insulation, with a thermal transfer coefficient  $U_f$  of 2.0 - 2.9 W/m<sup>2</sup>K
- Excellent acoustic insulation, with sound attenuation up to  $R_w = 43$  dB
- Versatile design, with a wide range of profiles and accessories
- High security, with the option to install a multipoint perimeter locking mechanism



**Applications:** ALBIO 109C is ideal for any type of construction, residential or commercial. The system can be used to create windows, doors, partition walls, balconies, and terraces.

**Conclusion:** ALBIO 109C is an excellent solution for those seeking a thermal break aluminum fixture system with superior thermal and acoustic insulation.

**The system offers a wide range of benefits, including:**

- Comfortable indoor climate throughout the year
- Reduced heating and cooling costs
- Versatile design options
- High level of security

If you are looking for an aluminum fixture system that meets the highest performance standards, ALBIO 109C is the solution





## Technical Specifications

### FRAME SIZE

Width: 72.7-100mm Height: 53.1-70mm

### DOOR SIZE

Width: 75.7mm Height: 82.1-96mm

### GLASS THICKNESS

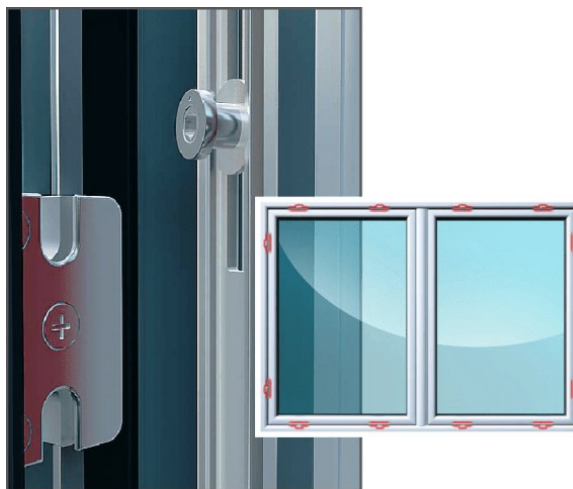
20-44mm

### THERMAL BREAK POLYAMIDE

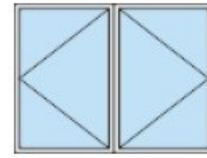
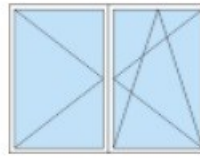
24mm (PA 6.6, 25%GF)

## Frame Configuration

### Perimeter Multipoint Locking Mechanism



## Tipologie



20 - 44mm



Clasa E1800  
(EN12208)

Glass Thickness  
Waterproofing



Clasa 4



Clasa C5/B5

Air permeability  
Wind resistance



Rw = 43dB



2.0 - 2.9 W/(m²K)

Sound reduction co-  
efficient  
Thermal transfer co-  
efficient



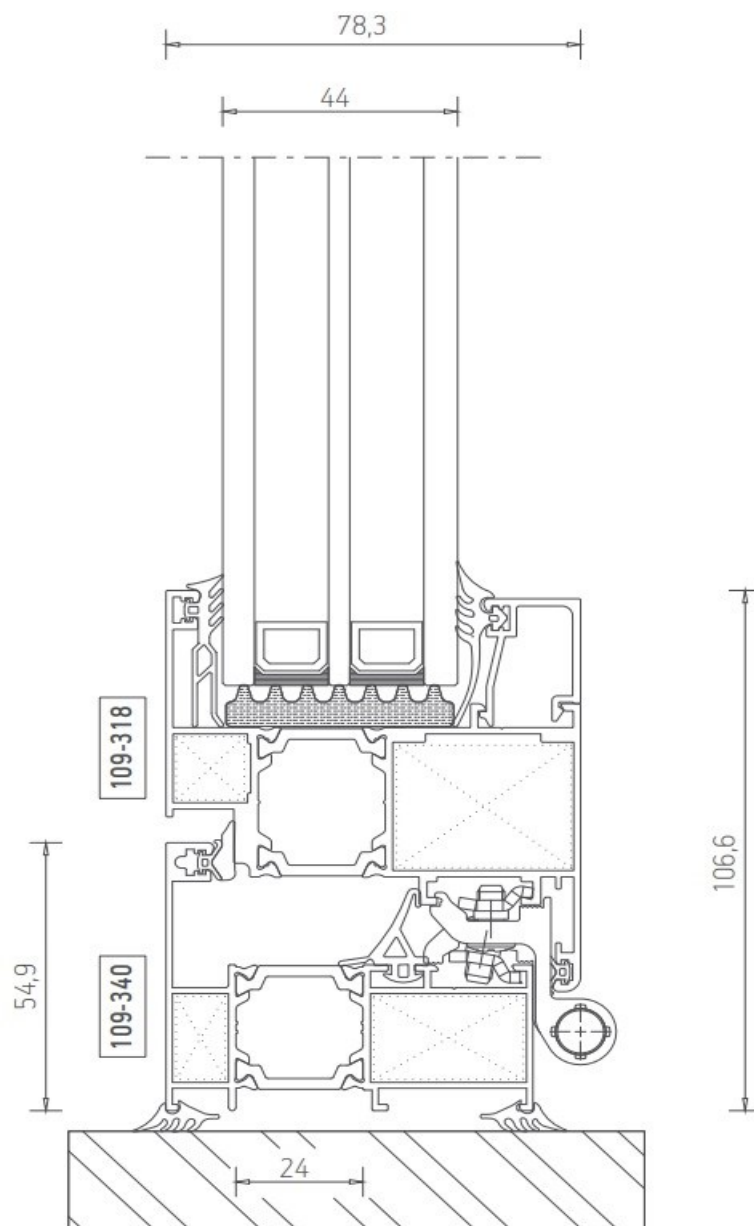
RAL COLORS Electrostatic painting offers a wide variety of color options, matte, metallic, embossed, etc., providing unlimited possibilities to designers and architects to meet specific aesthetic requirements.

[RAL Colour Chart \(exalco.ro\)](http://RAL Colour Chart (exalco.ro))



Wood imitation is a method of processing aluminum profiles to mimic wood

[Wood\\_Color\\_Book.pdf\(exalco.ro\)](http://Wood_Color_Book.pdf(exalco.ro))





## EXALCO Albio 109C STH

Albio 109C SuperThermo is a premium system for windows and doors that offers excellent thermal performance.

The system is designed to meet a wide range of functional and aesthetic requirements, as well as the highest standards of construction and energy efficiency.

Albio 109C SuperThermo provides excellent protection from heat and cold, creating a comfortable indoor climate all year round. Additionally, it minimizes the propagation of noise from the outside.

The system features a modern linear design, with a 34 mm polyamide thermal barrier. This ensures excellent energy savings and significantly reduces heating costs.

Albio 109C SuperThermo allows for the installation of a multipoint perimeter locking mechanism, offering a high level of security. .



## Here are some specific benefits of the Albio 109C SuperThermo system:

- \* Excellent thermal insulation: With a low coefficient of thermal transfer ( $U_w$ ) of only 1.5-2.0 W/m<sup>2</sup>K, it ensures high energy efficiency and reduces heating costs.
- \* Excellent sound insulation: Reducing external noise by up to 40 dB ensures a quiet indoor environment.
- \* Modern and elegant design: The linear profiles offer a contemporary and harmonious appearance.
- \* Enhanced security: The multipoint perimeter locking mechanism provides high protection against intrusions.

### Technical Specifications:

#### FRAME SIZE Width:

82.7-100mm Height: 53.1-70 mm

#### LEAF SIZE

Width: 85.7mm Height: 74.3-96.1 mm

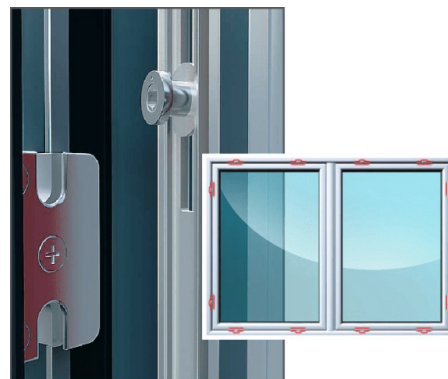
#### GLASS THICKNESS

26-54 mm

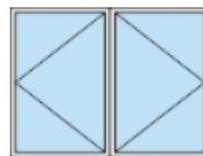
#### THERMAL BARRIER POLYAMIDE

34mm (PA 6.6, 25%GF)

**Frame Configuration: Multipoint perimeter locking mechanism**



## Types



Grosime Sticlă



26 - 54mm

Etanșeitate la apă



Clasa E750

Glass thickness  
Waterproofing

Permabilitate la aer



Clasa 4

Rezistența la vânt



Clasa C4

Air permeability  
Wind resistance

Coeficientul de atenuare fonică



Rw = 40dB

Coeficient de transfer termic



1.6 - 2.2 W/(m² K)

Sound reduction coefficient  
Thermal transfer coefficient



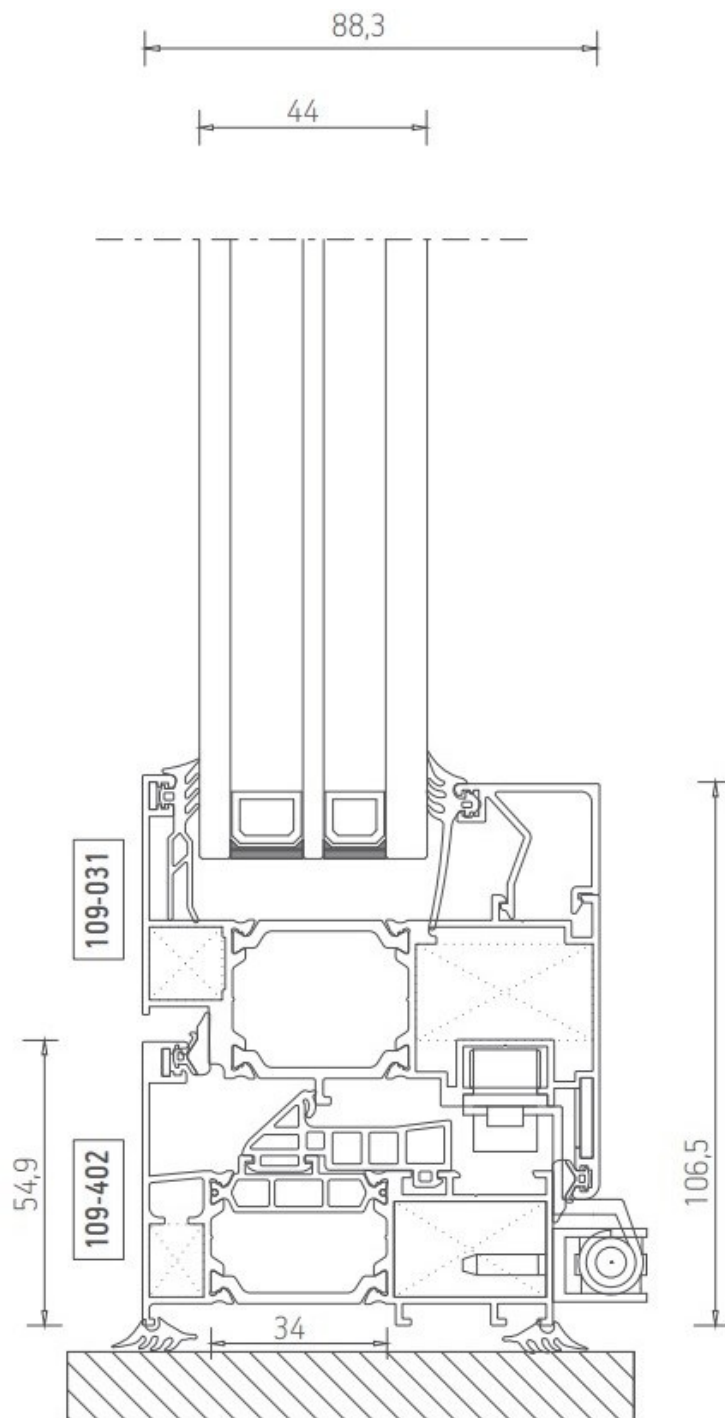
RAL colors refer to a standardized color matching system used in Europe. Electrostatic painting provides a wide range of color options, including matte, metallic, textured, etc., offering unlimited possibilities for designers and architects to meet specific aesthetic requirements. [RAL Colour Chart \(exalco.ro\)](http://RAL Colour Chart (exalco.ro))



Wood imitation is a method of processing aluminum profiles to mimic wood.

[Wood\\_Color\\_Book.pdf\(exalco.ro\)](http://Wood_Color_Book.pdf(exalco.ro))





## Sliding systems: solutions for spacious and efficient spaces

Sliding systems are a versatile and efficient solution for a variety of applications, including residential, commercial, and industrial. They offer several advantages, including:

### Wide and uninterrupted openings:

Sliding systems allow for creating wide and uninterrupted openings, which can be useful in small spaces or when maximizing natural light.



**Unobstructed view:** Sliding systems do not obstruct the view, making them an ideal solution for spaces with panoramic views.

**Versatility in configurations:** Sliding systems are available in a variety of configurations, making them suitable for any need. For example, they can be used to create doors, windows, partition walls, or even roofs.

**Easy handling:** Sliding systems are generally easy to handle, even by a single person.

**Durability:** Sliding systems are designed to withstand heavy use.



Aluminum alloy  
EN AW 6060T6  
EN 15088:2005



Powder coating  
According to the European  
QUALICOAT standard



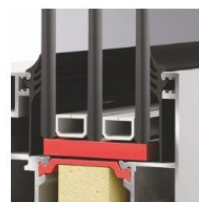
ANODIZATION

According to the European  
QUALANOD standard



TOLERANCES

EN 12020-2



GASKETS

EPDM / EPDM Foam

## EXALCO Albio 235

### ELEVATOR & SLIDE THERMAL BREAK SLIDING SYSTEM

Albio 235 is a sliding system capable of supporting a weight of up to 300 kg.

The system features a special lifting and sliding mechanism (Hebe Shiebe), ensuring smooth and silent movement.

Moreover, Albio 235 offers excellent thermal insulation, thanks to the 24 and 34 mm polyamide bars and PVC multi-chamber isolators.

Designed to meet a wide range of functional and aesthetic requirements, Albio 235 complies with the highest standards of construction and energy efficiency.



#### Performance of the system



Air permeability  
CLASS 4 (EN 12207:2000)



Water tightness  
CLASS 7A (EN 12208:2000)



Wind load resistance  
CLASS C4 (EN 12210:2000)

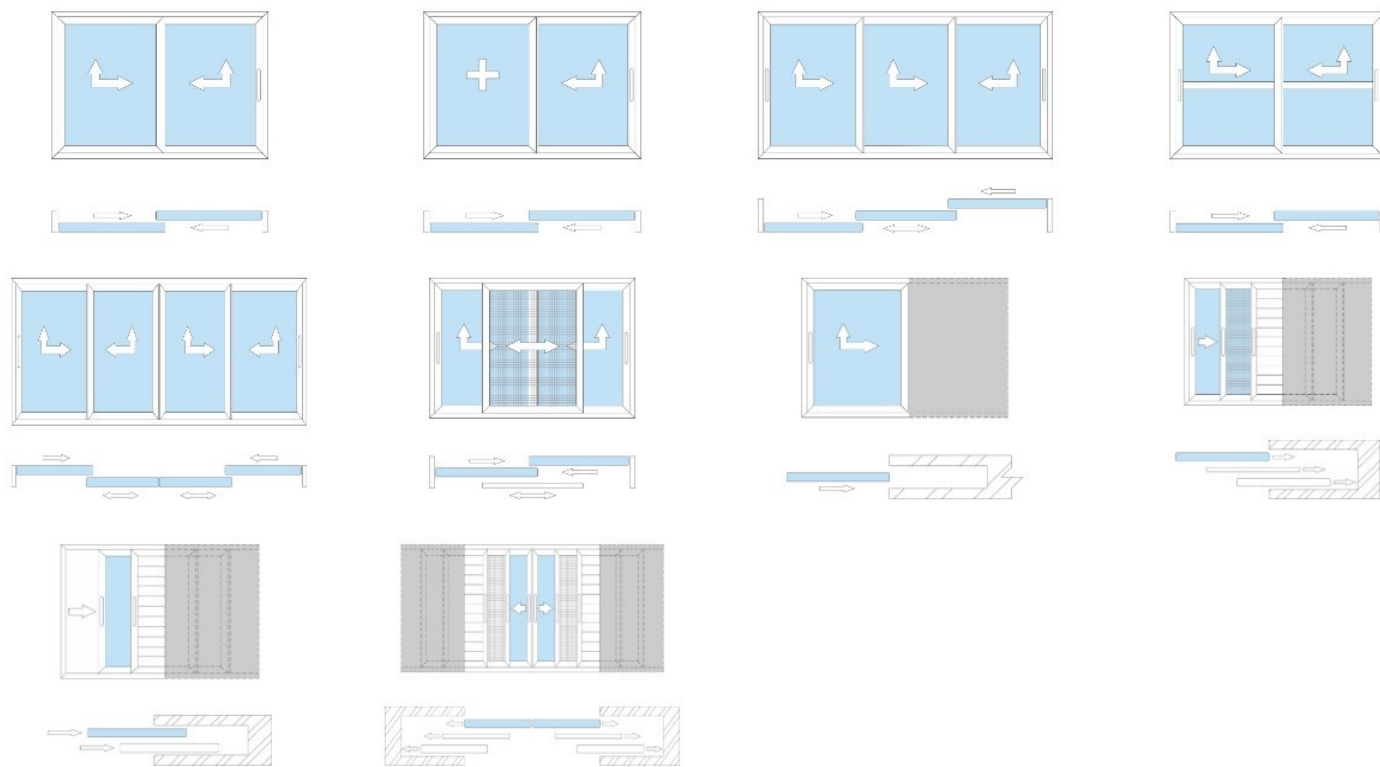


Coefficient of thermal transmittance (Uf)  
3.6 – 6.8 W/(m<sup>2</sup> K) (EN 10077-2:2003-10)





## Type



## TECHNICAL SPECIFICATIONS

### FRAME DIMENSIONS

Width: 56mm Height: 84.5mm



### GLASS THICKNESS

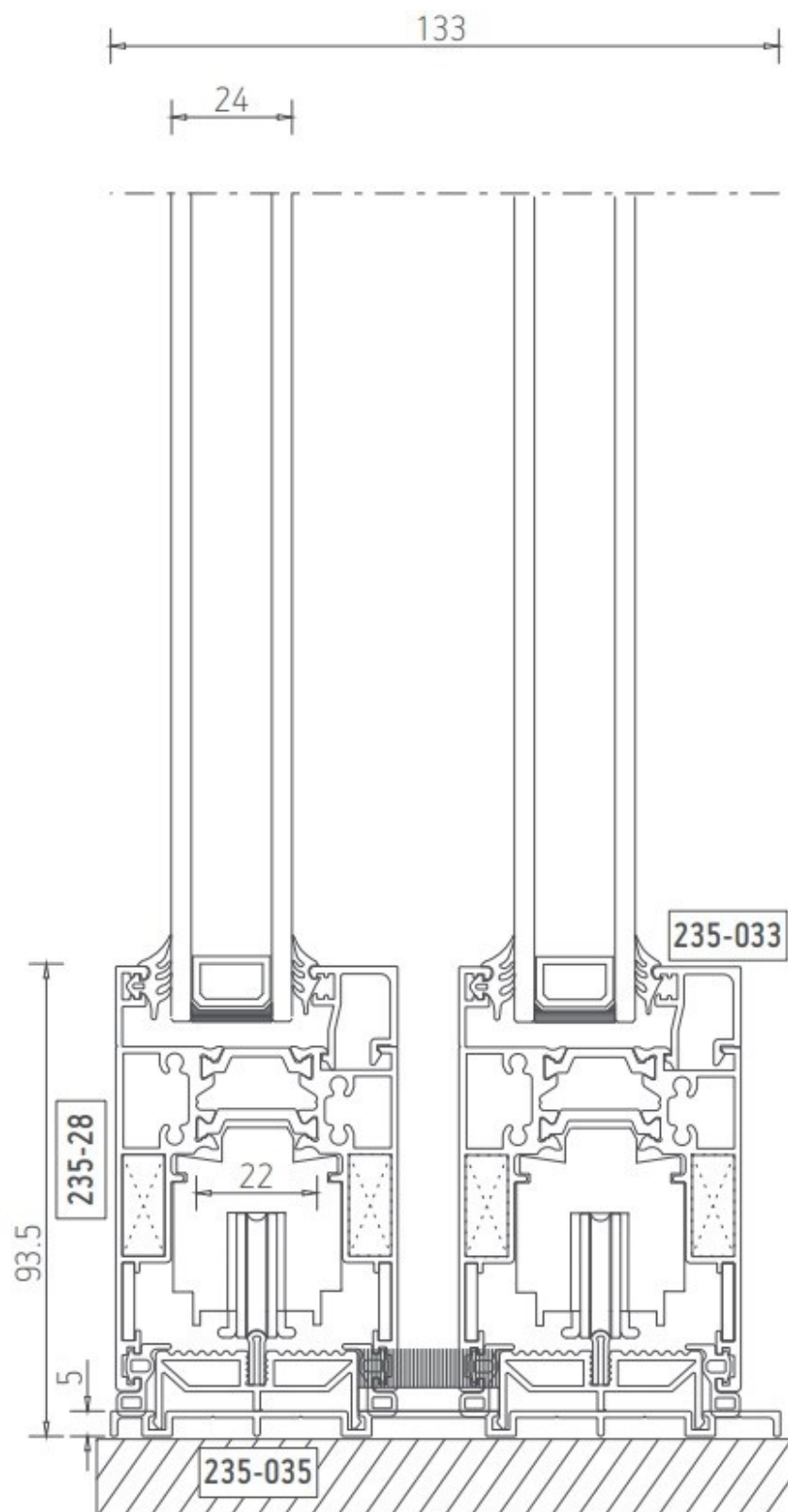
24mm and 36mm

### SLIDING ROLLERS : GU-937/957

**ROLLING TRACK:** Stainless steel, polyamide

### THERMAL BARRIER POLYAMIDE

12mm, 24mm, 34mm (PA 6.6, 25% GF)



## EXALCO Albio 256 THEA

### ELEVATOR & SLIDE SLIDING SYSTEM WITH THERMAL BARRIER

Albio 256 Thea stands out among high-end lift and slide systems, offering an ideal combination of minimalist design, impeccable sealing, and superior thermal insulation.

#### Key features:

**Easy opening:** The lift and slide system allows for easy and quiet operation of windows, even large ones.

**Perfect sealing:** EPDM seals ensure impeccable protection against water infiltration, making Albio 256 Thea an ideal solution for any climate.

**Minimalist design:** Narrow profiles (only 45.1 mm visible) and minimal overlap of sashes (42 mm) create an elegant and modern look, perfectly integrated into modern architecture.

**Excellent thermal performance:** The  $U_w$  heat transfer coefficient of 1.15 W/(m<sup>2</sup>K) (with  $U_g$  glass=0.6 W/(m<sup>2</sup>K)) significantly contributes to the energy efficiency of the building.

**Innovative drainage system:** Ensures efficient water drainage, increasing the durability and reliability of the system.

**Versatility:** Allows for the realization of various types of lift and slide windows, perfectly adapting to the specific needs of each project.

**Ideal solution for new constructions and renovations:** Albio 256 Thea can be installed in both new buildings and renovation projects, successfully replacing old fixtures.

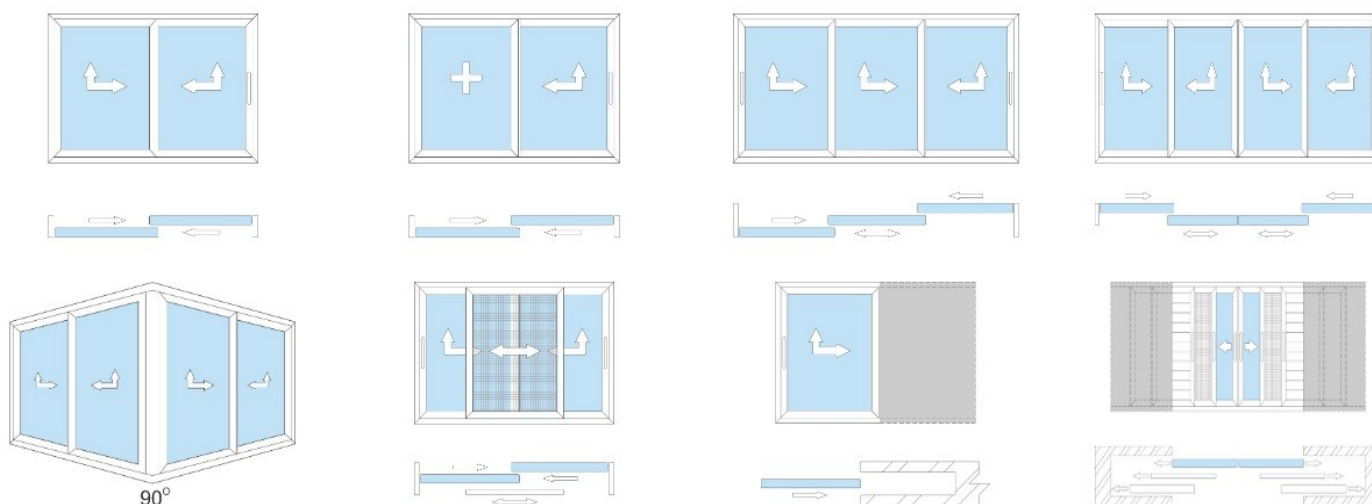


## SPECIFICHE TECNICHE

FRAME SIZE	GLASS THICKNESS	SLIDING ROLLERS	ROLLING TRACK	POLYAMIDE THERMAL BREAK
Width: 56mm Height: 60.3mm	22 - 44mm	GU-937	Acciaio inossidabile	10mm, 22mm, 34mm (PA 6.6, 25%GF)

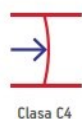


## Type



Glass thickness

Waterproofness



Air permeability

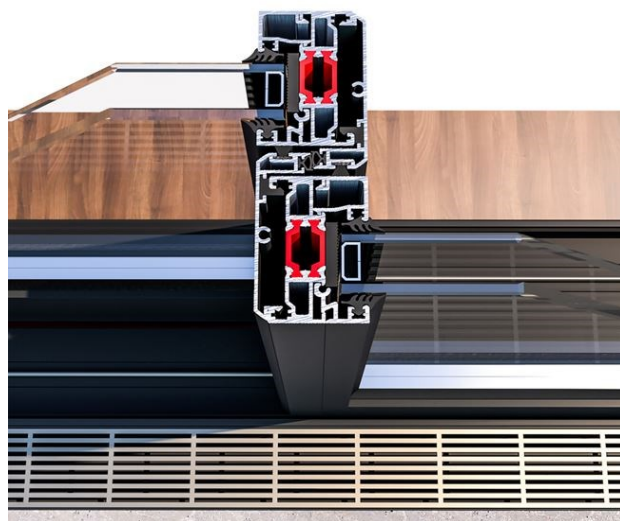
Wind resistance



Coefficient of sound at-  
tenuation  
Coefficient of thermal  
transmittance

Albio 256 Thêa is one of the top lifting-sliding systems, ensuring excellent water tightness thanks to the use of EPDM gaskets.

It has a minimal appearance thanks to the possibility of embedding the frame in the wall along the entire perimeter, leaving only the profiles visible with a width of just 45.1 mm and a door overlap width of only 42 mm.



An innovative solution for water drainage has been designed and implemented on Albio 256 Thêa, allowing optimal operation and offering the possibility of effective water drainage from inside the system.

## COLORS



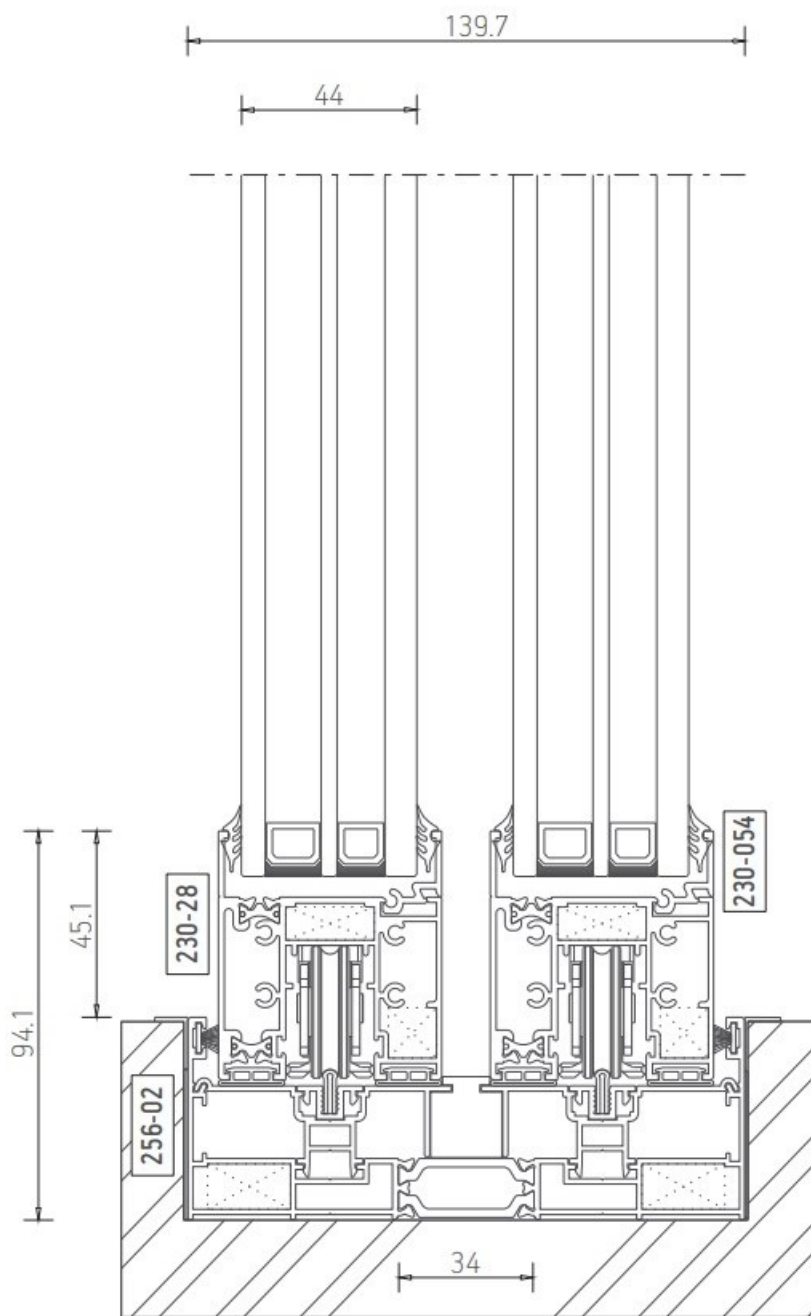
RAL colors Electrostatic painting offers a wide variety of color options, including matte, metallic, textured, etc., providing unlimited possibilities for designers and architects to meet specific aesthetic requirements. [RAL Colour Chart \(exalco.ro\)](http://RAL%20Colour%20Chart%20(exalco.ro))



Wood imitation is a method of processing aluminum profiles to mimic wood.

[Wood\\_Color\\_Book.pdf \(exalco.ro\)](http://Wood_Color_Book.pdf(exalco.ro))







## ACCESS DOORS

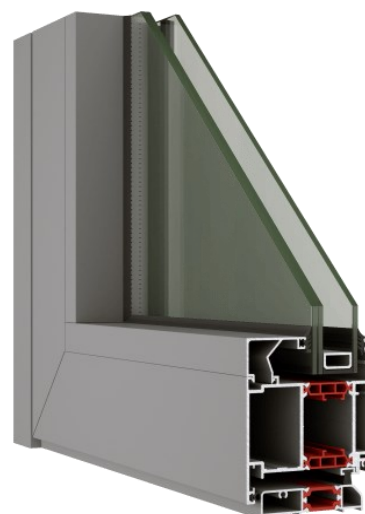
### EXALCO Albio 135 - THERMAL BARRIER ENTRANCE SYSTEM

The thermal barrier entrance system is ideal for constructions with high specifications, regardless of the type of panels or glass used.

Thanks to its robustness, it is suitable for applications involving frequent daily use, such as homes, residential, or public buildings.

Moreover, it ensures thermal, acoustic, and water insulation, along with an elegant aesthetic design.

This system combines classic features with cutting-edge technologies, meeting the highest construction standards.



### Technical Specifications

Heel Measurement	Frame Size	Glass Thickness	Thermal Break in Polyamide
Width: 86 mm Height: 69 mm	Width: 86 mm Height: 76.5 - 98 mm	24 - 64mm	34mm (PA 6.6, 25%GF)



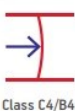
Albio 135 is a system designed for the construction of entrance doors, suitable for both residential and commercial applications with high specifications.

Thanks to its robust design, it is suitable for uses that require frequent daily use, such as in shopping centers, offices, residential complexes, and public buildings.

The system combines a classic design with innovative technology, meeting high construction standards.



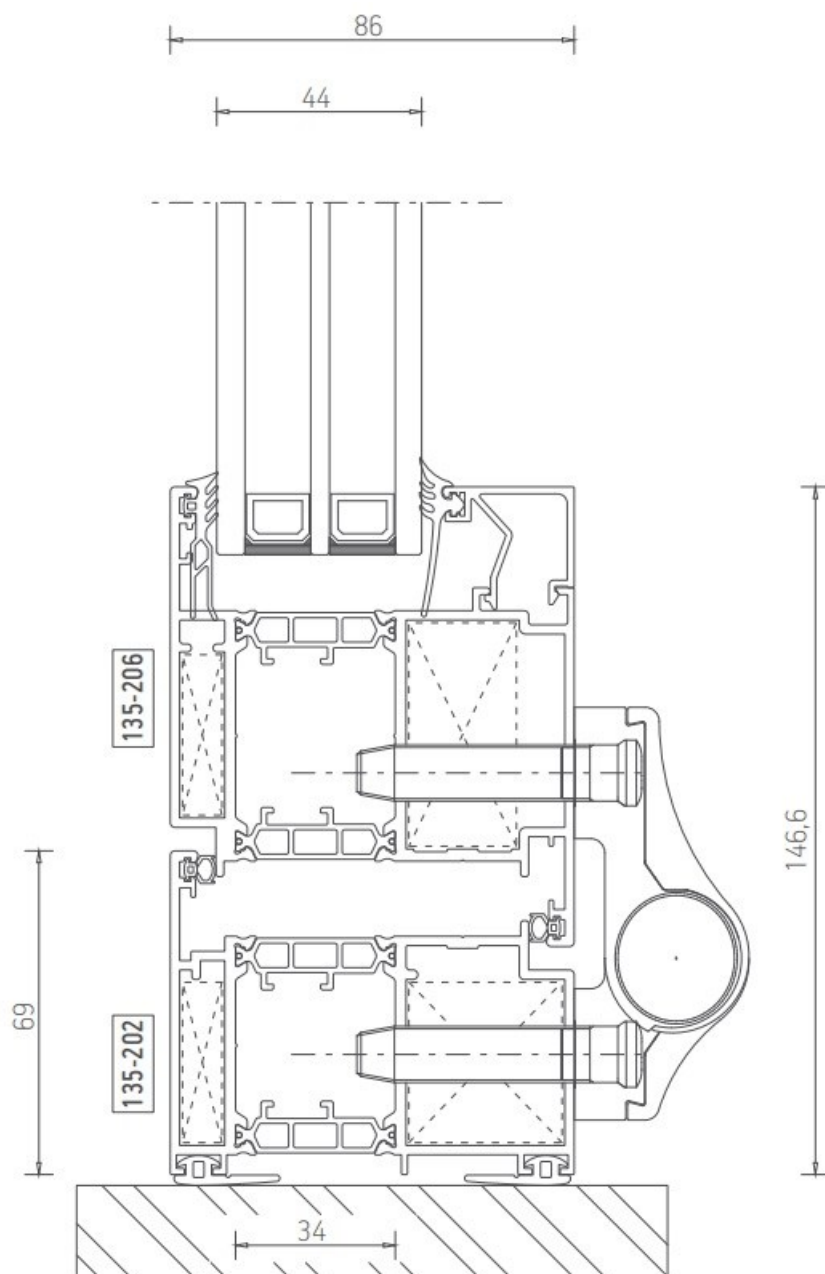
Glass thickness  
Water tightness



Air permeability  
Wind resistance



Coefficient of heat transfer





## HOTELIA DOORS

HOTELIA DOORS is a door system designed for hotel rooms, equipped with a 60mm insulation panel designed to ensure the necessary sound separation between the corridor and the bedrooms.

Its robust design makes it suitable for use in high-traffic situations, and its appearance can be customized to fit various operators.

The system is compatible with all card readers used in the hotel industry.



### Technical Specifications

#### HEEL SIZE

Width: 51.9 mm  
Height: 44-55 mm

#### BODY SIZE

Width: 60.4 mm  
Height: 64.1-94 mm

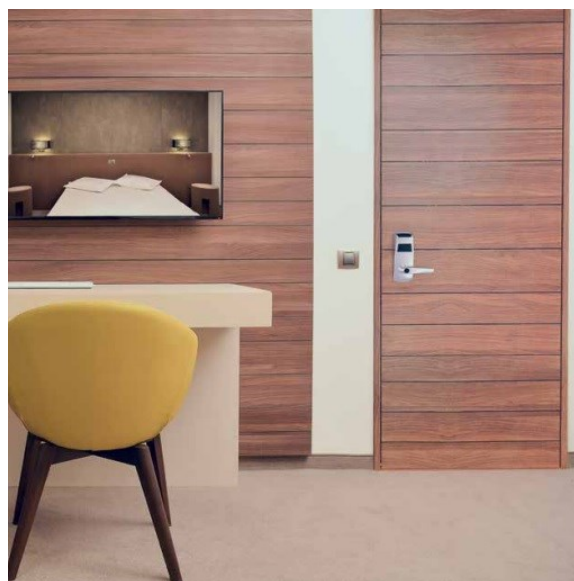
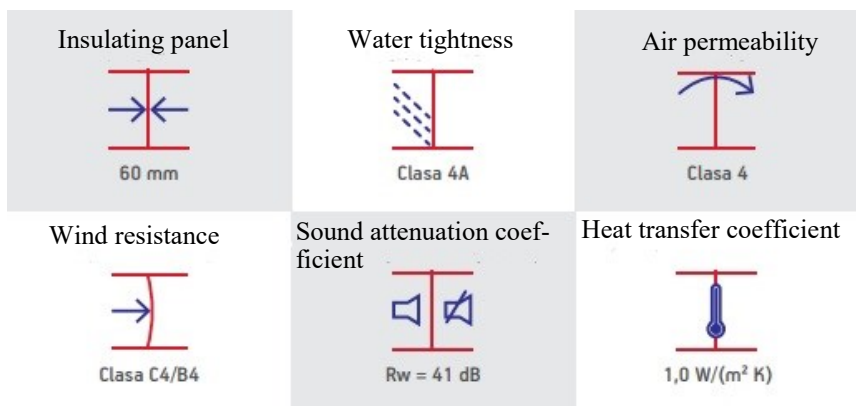
#### SPESSORE DEL VETRO

5-38mm

#### BARRIERA TERMICA IN POLIAMMIDE

18 mm, 19mm (PA 6.6, 25%GF)





## Modelli



EX 1



EX2



EX3



EX4



EX5



EX6



EX7



EX8



EX 9



EX10



EX11



EX12



EX13



EX14



EX15



EX16



EX17



EX18



EX19



EX20





EX21



EX22



EX23



EX24



EX25



## Residence Doors:

It represents an innovative luxury solution for entrance doors, suitable for both commercial and residential environments, seamlessly integrating aesthetics with functionality.

With a solid design, these doors are ideal for frequent use in various settings, such as shopping malls, offices, residential complexes, and public buildings.

They are designed with an elegant linear appearance and feature a 34 mm polyamide thermal break, offering excellent thermal and acoustic insulation as well as water resistance, thus completing an outstanding aesthetic.




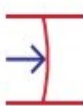

The system is compatible with existing access control systems, allowing access management through various technologies, including card readers, RFID, fingerprint readers, or a keypad.



### Technical Specifications

Heel Measure	Body Size	SPESSORE DEL VETRO	BARRIERA TERMICA IN POLIAMMIDE
Width: 86mm Height: 69mm	Width: 86mm Height: 74.3-96.1mm	25-60mm	34mm (PA 6.6, 25%GF)
Bottom Seal	Hinges	ACTUATOR	
"Airlock" automatic and brush	Applied, high-traffic, heavy-duty type	Manual or electric closing, handle	



<p>Insulating panel</p>  <p>80 mm</p>	<p>Water tightness</p>  <p>Clasa 4A</p>	<p>For air permeability</p>  <p>Clasa 4</p>
<p>Wind resistance</p>  <p>Clasa C4/B4</p>		<p>Thermal exchange coefficient</p>  <p>0,96 W/(m² K)</p>

## Modelli



R1



R2



R3



R4



R5



R6



R7



R8





R9



R10



R11



R12



R13



R14



R15



R16



R17



R18



R19



R20



R21



R22



R23



R24

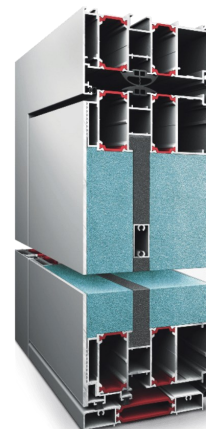
## Premium Door

Premium Security Door is an innovative security door system suitable for luxury residential applications, seamlessly harmonizing aesthetics with functionality and ensuring the best available thermal performance.

The locking mechanism provides unparalleled security with its 3 or 4-point multipoint locking system.

Consumers can choose from a wide range of available finishes as well as combinations of materials and colors to achieve the desired aesthetic effect.

The system is compatible with existing access control systems, allowing access management through card readers, RFID, fingerprint readers, or keypads.



### Specifice tehnice

#### Heel Size

Width: 121mm  
Height: 73.5mm

#### Body Size

Width: 115.8 mm  
Height: 71.6 mm

#### Panel Thickness

121mm

#### Polyamide Thermal Barrier

22mm, 24mm (PA 6.6, 25%GF)

#### Bottom Seal

"Airlock" automatic and brush

#### Hinges

Applied, high-traffic, heavy-duty type

#### Actuator

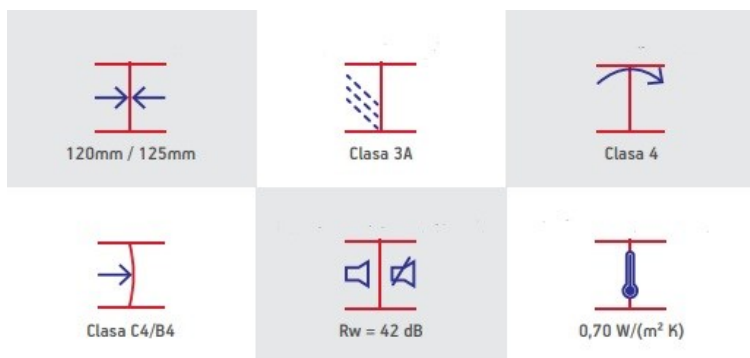
Manual or electric closing, handle

### SECURITY / PROTECTION

Electronic surveillance (external camera and internal 3.2" display) Red light indicator for door opening from the inside Fingerprint-based access system

### AUTOMATION

Automatic sensor for door opening in the internal handle



**Models**



PZ 1

PZ 2

PZ 3



PZ 4

PZ 5

PZ 6



PZ 7

PZ 8

PZ 9



PZ 10

PZ 11

PZ 12



PZ 13

PZ 14

PZ 15



PZ 16

PZ 17

PZ 18





PZ 19

PZ 20

PZ 21



PZ 22



PZ 23



PZ 24



PZ 25



PZ 26

PZ 27

PZ 28

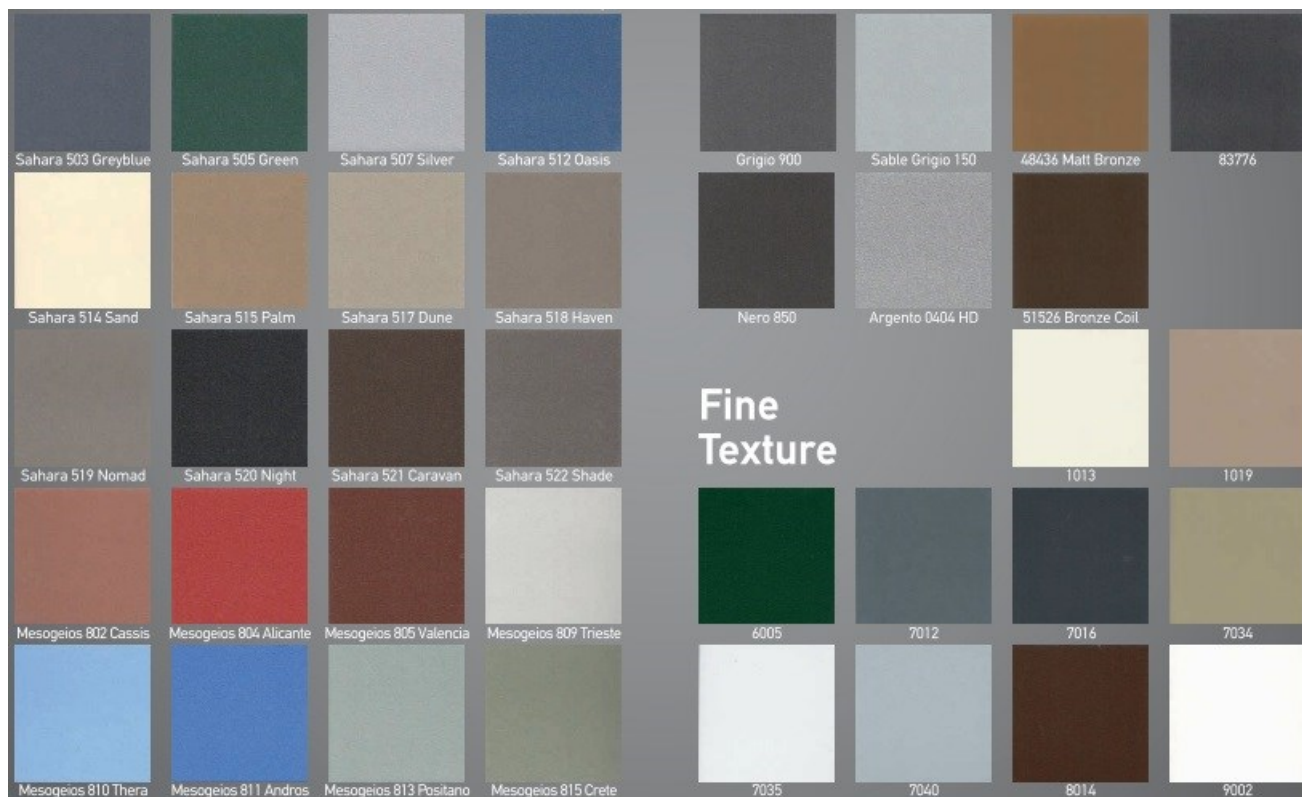


PZ 29

PZ 30

PZ 31







## Delivery

The delivery is carried out throughout Europe, with the assistance of trucks.



## Packaging

The packaging is carried out as follows:

- Individually with cardboard and stretch film for manual handling
- On wooden pallets for handling with the assistance of forklifts

